

A46 Coventry Junctions (Walsgrave) Scheme number: TR010066

6.3 Environmental Statement Appendices Appendix 7.4 Arboricultural Impact Assessment

APFP Regulations 5(2)(a)

Planning Act 2008

Infrastructure Planning (Applications: Prescribed Forms and
Procedure) Regulations 2009

Volume 6

November 2024

Infrastructure Planning

Planning Act 2008

The Infrastructure Planning
(Applications: Prescribed
Forms and Procedure)
Regulations 2009

A46 Coventry Junctions (Walsgrave)
Development Consent Order 2024

ENVIRONMENTAL STATEMENT APPENDICES
Appendix 7.4 Arboricultural Impact
Assessment

Regulation Number	Regulation 5(2)(a)
Planning Inspectorate Scheme Reference	TR010066
Application Document Reference	TR010066/APP/6.3
Author	A46 Coventry Junctions (Walsgrave), Project Team & National Highways

Version	Date	Status of Version
Rev 0	November 2024	Application issue

Table of contents

1.	Introduction.....	1
1.1.	Instruction	1
1.2.	Assessment scope	1
1.3.	Report limitations	1
1.4.	The Scheme	2
2.	Legislative and planning policy review	3
2.1.	Legislation.....	3
2.2.	National planning policy	4
2.3.	Local planning policy	7
3.	Statutory and non-statutory tree protection	10
3.1.	Tree Preservation Orders and Conservation Areas	10
3.2.	Felling licences	11
3.3.	Hedgerow Regulations.....	11
3.4.	Woodland status.....	11
4.	Baseline tree survey.....	13
4.1.	Survey criteria.....	13
4.2.	Existing tree appraisal	13
5.	Arboricultural impact of the Scheme	19
5.1.	Tree removals	19
6.	Arboricultural works.....	21
6.1.	Facilitation tree works.....	21
6.2.	Future tree growth and risk management	22
7.	Arboricultural method statement	23
7.1.	Arboricultural works schedule	23
7.2.	Stage 1 – pre-development	23
7.3.	Stage 2 – during development.....	25
7.4.	Stage 3 – post development	28
8.	Conclusions and recommendations	30
	Abbreviations	32
	Glossary	33

References	34
Annex A: Tree Survey Schedule and Methodology.....	35
Annex B: Arboricultural PlansSubmitted as a separate document...	57
Annex C: Tree Protection	58

1. Introduction

1.1. Instruction

- 1.1.1. This Arboricultural Impact Assessment (AIA) has been prepared by a competent expert who is a Professional member of the Institute of Chartered Foresters (ICF) (Chartered Arboriculturist) and a Professional member of the Arboricultural Association (AA) and is therefore required to uphold the professional and ethical standards within both the ICF and AA Codes of Conduct. The competent expert holds the Lantra certificate in professional tree inspection.
- 1.1.2. Beechwood Trees & Landscapes Ltd are appointed by Octavius Infrastructure Ltd (OIL) on behalf of National Highways (the Applicant) to prepare an arboricultural assessment in support of the Scheme at A46 Coventry Junctions (Walsgrave) (the Scheme). This arboricultural survey and report are produced in accordance with British Standard (BS) 5837:2012 Trees in Relation to Design, Demolition and Construction: Recommendations.

1.2. Assessment scope

- 1.2.1. The scope of this assessment is to:
- Conduct a survey of trees growing within the Scheme Order Limits (and within influencing distance) compliant with BS5837:2012 Trees in Relation to Design, Demolition and Construction: Recommendations.
 - Produce a constraints plan and survey schedule with reference to the existing tree cover across the Scheme including root systems, stems and canopy spreads.
 - Provide an assessment of the direct and indirect impacts of the Scheme on the existing tree cover, together with any further mitigation measures required.
 - Prepare an outline arboricultural method statement including tree protection measures.

1.3. Report limitations

- 1.3.1. The tree survey was undertaken from ground level only and is based on visual observations relevant to the design, demolition and construction process. Basic tree assessment instruments were used only. No internal decay equipment has been used or detailed root system investigation carried out for the purposes of the tree survey.
- 1.3.2. The survey is not a tree safety inspection. The survey is produced to accompany a Development Consent Order (DCO) application. Where significant and obvious defects were identified during the inspection, these have been recorded within

the general observations and preliminary recommendations section of the tree survey schedule at Annex A. A comprehensive tree safety inspection would be subject to a separate instruction.

- 1.3.3. Trees have been captured with reference to the supplied topographical survey. Several trees were not recorded on the topographical survey and therefore have been plotted indicatively, based on features of the Ordnance Survey.
- 1.3.4. Trees are dynamic structures and form part of the natural environment. The condition and subsequent BS5837:2012 quality assessment category is subject to change. As such, the content of this report is valid for a period of one year and thereafter would be subject to reinspection as necessary.
- 1.3.5. This report is prepared by an arboricultural professional. Any comments with reference to ecological, archaeological, buildings, soil or engineering should not be relied upon, and further specialist advice should be obtained.

1.4. The Scheme

- 1.4.1. The Scheme is located in the West Midlands approximately 5km to the east of Coventry city centre. The Scheme involves improvements to the B4082 which runs eastwards from Clifford Bridge Road to the existing Walsgrave Junction and the A46 which runs north-south to the east of Coventry. A full description of the Scheme is provided in Environmental Statement (ES) Chapter 2 (The Scheme) (**TR010066/APP/6.1**).
- 1.4.2. The A46 dual carriageway and the B4082 single carriageway are both affected by the works. The Scheme also includes land at Hungerley Hall Farm and Walsgrave Hill Farm. Coombe¹ Pool Site of Special Scientific Interest (SSSI) borders the Scheme to the east.

¹ Coombe is also spelt as Combe in some databases. For consistency, hereafter the spelling of Coombe will be used.

2. Legislative and planning policy review

2.1. Legislation

The following legislation are relevant to the trees and hedgerows within the Scheme.

Table 2.1 Summary of legislation relevant to trees and hedgerows

Legislation	Summary	How this is addressed in this assessment
The Hedgerow Regulations 1997	The Hedgerow Regulations 1997 makes provision for the protection of hedgerows within the countryside that meet certain criteria either due to length, location or importance.	Hedgerow removal is required by the Scheme and works will be undertaken in accordance with the Hedgerow Regulations.
Town and Country Planning (Tree Preservation) England Regulations 2012	Trees protected by either a Tree Preservation Order (TPO) or those situated within a local Conservation Area are afforded legal protection under the Town and Country Planning Act (1990) as amended, and subsequently, the Town and County Planning (Tree Preservation) (England) Regulations 2012.	There is a TPO within the Order Limits and this assessment has considered the impact on the associated trees.
Wildlife and Countryside Act 1981 (as amended)	The Wildlife and Countryside Act 1981 (as amended) and the Conservation of Species and Habitat Regulations 2017 provides statutory protection of birds, bats and other species that can inhabit trees. The Natural Environment and Rural Communities Act 2006 (Section 41 England and Wales) also places a duty on Local Planning Authorities to consider biodiversity when carrying out their duties.	Great care is necessary to avoid disturbance to those species and consideration should be given to the timing of tree works to avoid an offence under this legislation. Where the presence of such species is suspected, the Ecological Clerk of Works (ECoW) or statutory body should be contacted for further advice. The role of the ECoW will be set out in the First Iteration Environmental Management Plan (EMP) prior to construction. The effect of the removal of trees and hedgerows on habitats is assessed in ES Chapter 8 (Biodiversity) (TR010066/APP/6.1)
The Conservation of Habitats and Species Regulations 2017 (as amended)	The 'Habitats Regulations' transpose European Union Council Directive 92/43/EEC on the conservation of natural habitats and of wild fauna and flora (EC Habitats Directive) into national law. These regulations provide for the designation and protection of 'European Sites', the protection of 'European Protected Species' and the adaptation of planning controls for the	Great care is necessary to avoid disturbance to those species and consideration should be given to the timing of tree works to avoid an offence under this legislation. Where the presence of such species is suspected,

Legislation	Summary	How this is addressed in this assessment
	protection of such sites and species. Under the regulations, public bodies have a duty in exercising their functions to have regard to the EC Habitats Directive.	the Ecological Clerk of Works (ECoW) or statutory body should be contacted for further advice. The role of the ECoW will be set out in the First Iteration Environmental Management Plan (EMP) prior to construction. The effect of the removal of trees and hedgerows on habitats is assessed in ES Chapter 8 (Biodiversity) (TR010066/APP/6.1)

2.2. National planning policy

National Networks National Policy Statement 2024

- 2.2.1. The National Networks National Policy Statement (NPS NN) (Department for Transport (DfT), 2024) sets out the Government's policies to deliver development of Nationally Significant Infrastructure Projects (NSIP) on the national road and rail networks in England. The Secretary of State uses the NPS NN as the primary basis for making decisions on DCO applications for highway schemes.
- 2.2.2. Key policy from the NPS NN relevant to trees and hedgerows of the Scheme is set out below in Table 2.2. See also the NPS NN Accordance Tables (TR010066/APP/7.2) for an assessment of the Scheme's compliance with the NPS NN.

Table 2.2 NPS NN requirements for trees and hedgerows

Paragraph	Applicant's assessment / mitigation requirement	How this is addressed in this assessment
5.62	Ancient woodland and ancient and veteran trees are irreplaceable habitats. England's ancient woodlands and ancient and veteran trees support high levels of biodiversity. They are home to a quarter of England's priority species for conservation and once lost they cannot be recreated. They also deliver many ecosystem services including clean water and healthy soils, carbon storage, support for people's wellbeing and their long-standing cultural values. The Keepers of Time published in 2022 updates the government's policy to recognise the value of England's ancient and native woodlands and ancient and veteran trees. It restates the government's commitment to evaluate the threats facing these habitats and sets out updated	No veteran or ancient trees are listed within the Order Limits however, one veteran condition tree was recorded during the tree survey and is located just outside the Order Limits, with the root protection area extending within the Order Limits. Works close to the veteran tree have been assessed and protection

Paragraph	Applicant's assessment / mitigation requirement	How this is addressed in this assessment
	principles and objectives to protect and improve these habitats for future generations.	measures are included as part of this assessment.
5.63	The Secretary of State should not grant development consent for any development that would result in the loss or deterioration of irreplaceable habitats including ancient woodland and ancient and veteran trees unless there are wholly exceptional reasons (for example, where the public benefit would clearly outweigh the loss or deterioration of habitat) and a suitable compensation strategy exists.	No veteran or ancient trees are listed within the Order Limits however, one veteran condition tree was recorded during the tree survey and is located just outside the Order Limits, with the root protection area extending to within the Order Limits. Works close to the veteran tree have been assessed and protection measures are included as part of this assessment.
5.182	Productive forests provide economic benefits to communities and ensure a supply of domestic timber resources. In addition, forests, trees and woodlands also provide wider ecosystem services. The Environmental Improvement Plan recognises the need to protect trees and woodland and increase tree canopy and woodland cover. Specific actions are set out in the England Trees Action Plan 2021 to 2024, including a commitment to ensure strong planning reforms will lead to more trees being planted and ensure strong protections for existing trees.	This assessment includes protection measures for retained trees and hedgerows within the Order Limits.
5.195	Existing trees and woodlands should be retained where possible. The applicant should assess the impacts on, and loss of, all trees and woodlands within the project boundary and avoid and mitigate for any direct and indirect effects and any risk of net deforestation as a result of the scheme (Irreplaceable Habitats require separate consideration 5.57-5.58). Mitigation may include the use of buffers to enhance resilience, improvements to connectivity, and improved woodland management. Where woodland loss is unavoidable, compensation schemes will be required, and the long-term management and maintenance of newly planted trees should be secured. Opportunities for tree planting and woodland creation should be maximised.	<p>The Environmental Masterplan (ES Figure 2.4 (TR010066/APP/6.2)) and construction methodology have been developed in conjunction with the Arboricultural consultant.</p> <p>Effects of the Scheme on the removal of trees and hedgerows are provided in ES Chapter 7 (Landscape and Visual Effects) (TR010066/APP/6.1), including mitigation measures.</p> <p>This assessment includes protection measures and construction phase management requirements for retained trees and hedgerows.</p>

National Planning Policy Framework

2.2.3. The National Planning Policy Framework (NPPF) (December 2023) has an overarching environmental objective, encompassing protection and enhancement of the natural environment and biodiversity. The following paragraphs within the NPPF set out policies which guide the planning policy and decision-making process in relation to trees. These are addressed in Table 2.3 below.

Table 2.3: NPPF requirements for trees and hedgerows

Paragraph	Applicant's assessment / mitigation requirement	How this is addressed in the assessment
136	Trees make an important contribution to the character and quality of urban environments and can also help mitigate and adapt to climate change. Planning policies and decisions should ensure that new streets are tree-lined, that opportunities are taken to incorporate trees elsewhere in developments (such as parks and community orchards), that appropriate measures are in place to secure the long-term maintenance of newly-planted trees, and that existing trees are retained wherever possible. Applicants and local planning authorities should work with highways officers and tree officers to ensure that the right trees are planted in the right places, and solutions are found that are compatible with highways standards and the needs of different users.	Effects of the Scheme on the removal of trees and hedgerows are provided in ES Chapter 7 (Landscape and Visual Effects) (TR010066/APP/6.1), including mitigation measures as presented on the Environmental Masterplan (ES Figure 2.4 (TR010066/APP/6.2)). This assessment includes protection measures and construction phase management requirements for retained trees and hedgerows. This assessment includes an initial Arboricultural Management Plan. This will be developed during detailed design and included in the Second Iteration EMP, prior to construction.
180 (b and d)	Planning policies should contribute to and enhance the natural and local environment by: <ul style="list-style-type: none"> Recognising the intrinsic character and beauty of the countryside, and the wider benefits from natural capital and ecosystem services – including the economic and other benefits of the best and most versatile agricultural land, and of trees and woodland. Minimising impacts on and providing net gains for biodiversity, including by establishing coherent ecological networks that are more resilient to current and future pressures. 	The Environmental Masterplan (ES Figure 2.4 (TR010066/APP/6.2)) has been developed in conjunction with the Arboricultural consultant and the biodiversity team. Effects of the Scheme on existing habitats related to trees and hedgerows are provided in ES Chapter 8 (Biodiversity) (TR010066/APP/6.1).
186	When determining planning applications, Local Planning Authority's (LPA) should apply the following principles:	The Environmental Masterplan (ES Figure 2.4 (TR010066/APP/6.2)) has been

Paragraph	Applicant's assessment / mitigation requirement	How this is addressed in the assessment
	<ul style="list-style-type: none"> If significant harm to biodiversity resulting from a development cannot be avoided (through locating on an alternate site with less harmful impacts), adequately mitigated, or, as a last resort, compensated for, then planning permission should be refused. Development on land within or outside a Site of Special Scientific Interest, and which is likely to have an adverse effect on it (either individually or in combination with other developments), should not normally be permitted. The only exception is where the benefits of the development in the location proposed clearly outweigh both its likely impact on the features of the Scheme that make it of special scientific interest, and any broader impacts on the national network of Sites of Special Scientific Interest. Development resulting in the loss or deterioration of irreplaceable habitats (such as ancient woodland and ancient or veteran trees) should be refused unless there are wholly exceptional reasons and a suitable compensation strategy exists. Development whose primary objective is to conserve or enhance biodiversity should be supported; while opportunities to improve biodiversity in and around developments should be integrated as part of their design, especially where this can secure measurable net gains for biodiversity or enhance public access to nature where this is appropriate. 	<p>developed in conjunction with the Arboricultural consultant and the biodiversity team.</p> <p>Effects of the Scheme on existing habitats related to trees and hedgerows are provided in ES Chapter 8 (Biodiversity) (TR010066/APP/6.1).</p> <p>The TPO located within the Order Limits also forms part of Coombe Pool Site of Special Scientific Interest (SSSI). This assessment has considered the impact on the associated trees.</p> <p>No veteran or ancient trees are listed within the Order Limits however, one veteran condition tree was recorded during the tree survey and is located just outside the Order Limits, with the root protection area extending to within the Order Limits. Works close to the veteran tree have been assessed and protection measures are included as part of this assessment. ES Chapter 8 (Biodiversity) (TR010066/APP/6.1) summarises the effects of the Scheme on biodiversity and the mitigation measures included.</p>

2.3. Local planning policy

- 2.3.1. The Order Limits are within both Coventry City Council and Rugby Borough Council planning boundaries. Both Council's planning policies have therefore been carefully reviewed in preparation of this survey and report, as discussed below in Table 2.4.

Table 2.4: Local planning policy in relation to trees and hedgerows

LPA policy	Applicant's assessment / mitigation requirement	How this is addressed in the assessment
Coventry City Council	Policy GE3: Sites of Special Scientific Interest (SSSIs), Local Nature Reserves (LNRs), Ancient Woodlands, Local Wildlife and	Effects of the Scheme on existing habitats related to trees and hedgerows are provided in

LPA policy	Applicant's assessment / mitigation requirement	How this is addressed in the assessment
Local Plan (2011-2031)	<p>Geological Sites will be protected and enhanced. Proposals for development on other sites, having biodiversity or geological conservation value, will be permitted provided that they protect, enhance and/or restore habitat biodiversity. Development proposals would be expected to ensure that they:</p> <ul style="list-style-type: none"> • lead to a net gain of biodiversity, where appropriate, by means of an approved ecological assessment of existing site features and development impacts • protect or enhance biodiversity assets and secure their long-term management and maintenance • avoid negative impacts on existing biodiversity • preserve species which are legally protected, in decline, are rare within Coventry or which are covered by national, regional or local Biodiversity Action Plans <p>Where this is not possible, adequate mitigation measures must be identified. If mitigation measures are not possible on site, then compensatory measures involving biodiversity offsetting will be considered, but only in exceptional circumstances.</p> <p>Biodiversity would be encouraged particularly in areas of deficiency, in areas of development and sustainable urban extensions, and along wildlife corridors. Opportunities would be sought to restore or recreate habitats, or enhance the linkages between them, as part of the strategic framework for green infrastructure. Protected species, and species and habitats identified in the Local Biodiversity Action Plan (LBAP), will be protected and conserved through a buffer or movement to alternative habitat. Identified important landscape features, including Historic Environment assets, trees protected by preservation orders, individual and groups of ancient trees, ancient and newly-planted woodlands, ancient hedgerows and heritage assets of value to the locality, will be protected against loss or damage. In the case of archaeological remains, all practical measures must be taken for their assessment and recording in accordance with Policy HE2.</p>	<p>ES Chapter 8 (Biodiversity) (TR010066/APP/6.1).</p> <p>Effects of the Scheme on the removal of trees and hedgerows are provided in ES Chapter 7 (Landscape and Visual Effects) (TR010066/APP/6.1), including mitigation measures as presented on the Environmental Masterplan (ES Figure 2.4 (TR010066/APP/6.2)).</p> <p>No veteran or ancient trees are listed within the Order Limits however, one veteran condition tree was recorded during the tree survey and is located just outside the Order Limits, with the root protection area extending to within the Order Limits. Works close to the veteran tree have been assessed and protection measures are included as part of this assessment. The TPO located within the Order Limits also forms part of Coombe Pool SSSI. This assessment has considered the impact on the associated trees.</p> <p>This assessment includes protection measures and construction phase management requirements for retained trees and hedgerows.</p>
	<p>Policy GE4: Development proposals would be positively considered provided:</p> <ul style="list-style-type: none"> • there is no unacceptable loss of, or damage to, existing trees or woodlands during or as a result of 	<p>This assessment has been prepared in accordance with the 'Trees & Development Guidelines for Coventry – Supplementary Planning Document October 2020'.</p>

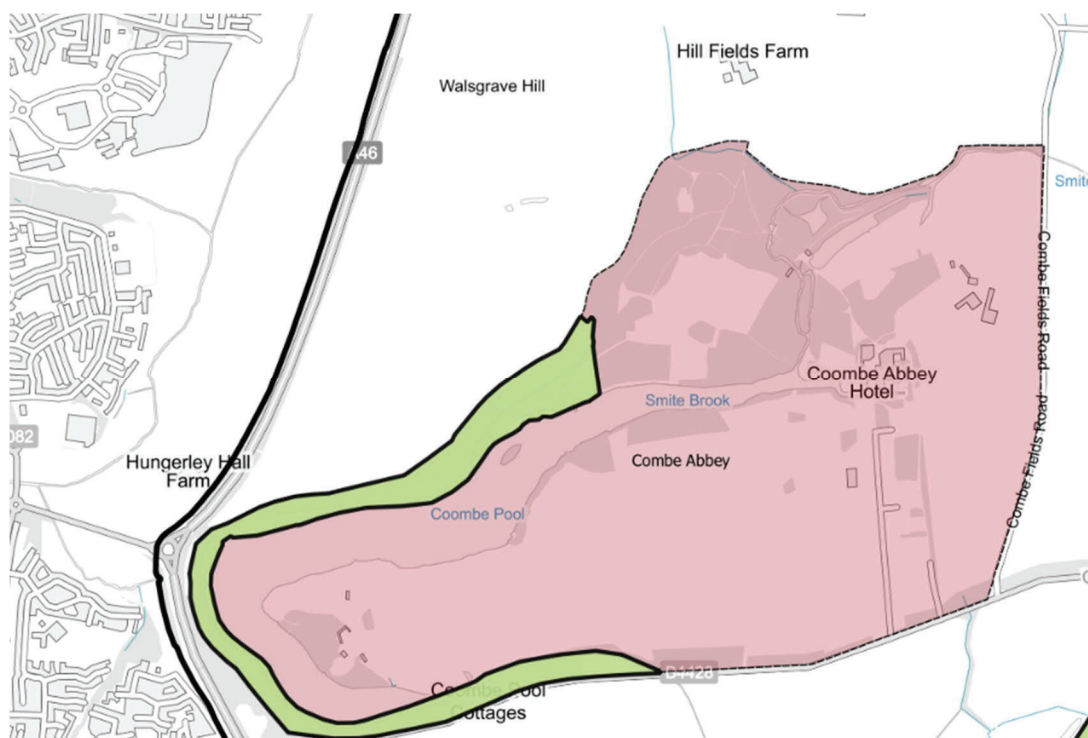
LPA policy	Applicant's assessment / mitigation requirement	How this is addressed in the assessment
	<p>development, any loss should be supported by a tree survey</p> <ul style="list-style-type: none"> trees not to be retained as a result of the development are replaced with new trees as part of the landscape proposals existing trees worthy of retention are sympathetically incorporated into the overall design of the Scheme including all necessary measures taken to ensure their continued protection and survival during construction <p>Development proposals that seek to remove trees that are subject to 'Protection', without justification, will not be permitted.</p>	<p>A tree survey has been undertaken and is presented in this assessment.</p> <p>Effects of the Scheme on the removal of trees and hedgerows are provided in ES Chapter 7 (Landscape and Visual Effects) (TR010066/APP/6.1), including mitigation measures as presented on the Environmental Masterplan (ES Figure 2.4 (TR010066/APP/6.2)).</p>
<p>Rugby Borough Council Local Plan (2011-2031)</p>	<p>Policy NE1:</p> <p>Ancient Woodland Planning permission will be refused for development resulting in the loss or deterioration of ancient woodland, and/or the loss of aged or veteran trees found outside of ancient woodland unless the need for, and benefits of, the development in that location clearly outweighs the loss. All development proposals in the proximity of ancient woodland shall incorporate buffers having regard to Natural England's standing advice.</p> <p>Developers would be required to take measures during the development process to prevent the disturbance of wildlife and to make provision for the protection and subsequent retention of natural 74 features and necessary supporting habitats, such as ponds, hedgerows, ditches and trees which are to be retained. Where loss of habitat is unavoidable, adequate mitigation measures should be undertaken and only where this is not possible, adequate compensation measures should be implemented. In this instance development proposals should be guided by the Council's approach to biodiversity offsetting (or equivalent) as set out in the Warwickshire, Coventry and Solihull Green Infrastructure Strategy, or any subsequent update to this document and national policy. In all instances, the long-term management and maintenance of ecological features must be demonstrated. In order to assist in ecological assessments, the Warwickshire Biological Records Centre should be consulted.</p>	<p>No veteran or ancient trees are listed within the Order Limits however, one veteran condition tree was recorded during the tree survey and is located just outside the Order Limits, with the root protection area extending to within the Order Limits. Works close to the veteran tree have been assessed and protection measures are included as part of this assessment. Effects of the Scheme on the removal of trees and hedgerows are provided in ES Chapter 7 (Landscape and Visual Effects) (TR010066/APP/6.1), including mitigation measures as presented on the Environmental Masterplan (ES Figure 2.4 (TR010066/APP/6.2)).</p> <p>Effects of the Scheme on existing habitats related to trees and hedgerows are provided in ES Chapter 8 (Biodiversity) (TR010066/APP/6.1).</p>

3. Statutory and non-statutory tree protection

3.1. Tree Preservation Orders and Conservation Areas

- 3.1.1. Trees protected by either a TPO or those situated within a local Conservation Area are afforded legal protection under the Town and Country Planning Act (1990) and the Town and Country Planning (Tree Preservation) (England) Regulations 2012.
- 3.1.2. Coventry City Council were contacted during the preparation of this report to determine whether any trees in the Scheme are afforded statutory protection. It has been confirmed using the Council's online planning map that as of 18 April 2024 none of the trees recorded during the survey are protected by a TPO. The Scheme Order Limit does not lie within the Coventry City Council Conservation Area.
- 3.1.3. Rugby Borough Council were contacted during the preparation of this report to determine whether any trees in the Scheme are afforded statutory protection. It has been confirmed that part of Woodland W1 is protected by Rugby Borough Council's TPO No.82, 23 September 1985 - Land east of A46 Coventry Eastern Bypass and Coombe Fields – 'Coombe Pool Plantation' (hatched green within Plate 3-1 below). The Scheme is also bordered by the Coombe Abbey Conservation Area and SSSI hatched pink within Plate 3-1 below.

Plate 3.1 Rugby Borough Council TPO No. 82 (hatched green), which also forms part of Coombe Abbey Conservation Area / SSSI (hatched pink)



3.2. Felling licences

- 3.2.1. Felling of trees outside of a residential garden would fall under the controls of the Forestry Act (1967), administered by the Forestry Commission. The volume of timber felled is controlled by issuing a Felling Licence. An exemption applies where the felling of trees is immediately required for the purpose of development which is authorised by approval of full planning permission, or in this case the DCO. Checks must be made with the appropriate Local Planning Authority and Forestry Commission ahead of any tree removal works.

3.3. Hedgerow Regulations

- 3.3.1. The Hedgerow Regulations (1997) protect agricultural or countryside hedgerows which meet the requirements of an 'important hedgerow'. These include a minimum length of 20m (or meets another hedge at each end) and a minimum age of at least 30 years. Several other ecological and archaeological/heritage features can constitute an important hedgerow and further advice from a qualified ecologist is recommended in advance of any planned works which could impact established hedgerows on or bordering agricultural or countryside land. Prior to the removal or destruction of a protected hedgerow, an application must be made to the appropriate Local Planning Authority.

3.4. Woodland status

- 3.4.1. A review of the Department for environment Food & Rural Affairs' Magic Map was undertaken to understand the status of woodland either within the Scheme Order Limits or within influencing distance of 15 metres of the Order Limits (statutory buffer zone). It was confirmed that as of 18 April 2024 none of the woodland recorded either on or adjacent to the Scheme Order Limits is classified as either ancient and semi-natural woodland or ancient replanted woodland.
- 3.4.2. The Scheme is bordered by Priority Habitat Inventory – Deciduous Woodland, Priority Habitat Inventory – Traditional Orchards and National Forest Inventory – Broadleaved, which are Biodiversity Action Plan (BAP) Priority Habitats (shown as green shaded areas in Plate 3-2 below), these are a non-statutory designation which have the potential to be a material consideration in the planning process.
- 3.4.3. A review of the Woodland Trust, Ancient Tree Register was undertaken on 18 April 2024 and no veteran or ancient trees were listed either within the Scheme Order Limits or within influencing distance. However, one tree was recorded of veteran condition during the tree survey which was T12 pedunculate oak.

Plate 3.2 Woodland designations across the Scheme (Source: Magic Map accessed April 2024)



4. Baseline tree survey

4.1. Survey criteria

- 4.1.1. The tree survey was undertaken on 21, 28 and 29 September 2023 and 3 April 2024. All trees were inspected from ground level only. Trees have been captured with reference to the supplied Topographical Survey. Several trees were not recorded on the Topographical Survey and therefore have been plotted indicatively, based on features of the Ordnance Survey.
- 4.1.2. The survey recorded trees either as individuals (T), groups of trees (G), hedgerows (H) or woodlands (W). The identification numbers associated with each tree are recorded within the Tree Survey Schedule and Arboricultural Plans at Annex A and B, respectively.
- 4.1.3. The BS5837:2012 Cascade Chart for Tree Quality Assessment at Annex A sets out the methodology for surveying trees on development sites, to identify them within a prioritised system of retention categories.

4.2. Existing tree appraisal

- 4.2.1. The survey recorded a total of 55 individual trees, 29 groups of trees, 18 hedgerows and one woodland. These comprise of 12 'A' category, 38 'B' category, 49 'C' category and 4 'U' category. These are shown on the Tree Constraints Plans in Annex B.
- 4.2.2. The A category trees and woodland include T1, T11, T12, T13, T21, T22, T28, T33, T34, T40, T54 (pedunculate oak and atlas cedar) and W1 (mixed woodland). The 'A' category individuals are positioned within field land either east or west of the A46 and along the Coombe Pool woodland boundary. The mature and late-mature trees are of high value within the development context and of a significant contribution to the wider rural setting. All trees positioned within Woodland W1 including trees T27-T55 are afforded statutory protection under Rugby Borough Council's TPO No.82 and the Coombe Abbey Conservation Area.
- 4.2.3. W1 is an 'A' category woodland positioned on the eastern boundary of the Order Limits This woodland is largely protected by TPO No.82. W1 borders Coombe Pool, part of Coombe Abbey Park. This woodland is classed as Priority Habitat Inventory – Deciduous Woodland and comprises a vast mix of tree species, age and maturity. This woodland is of historic significance to Coombe Abbey and collectively of high arboricultural, landscape, amenity and likely habitat value.
- 4.2.4. T12 (pedunculate oak) is categorised as veteran Due to its age, size and condition, this tree is of exceptional value from a landscape and habitat

conservation perspective. This tree would fulfil the definition of a veteran tree, as set out in Annex 2 of the NPPF and discussed in Section 2.1.4 of this report.

Tree T12 is positioned outside the Order Limits, with its root protection area and veteran root protection area extending into the Order Limits. The location of tree T12 is shown on Tree Constraints Plan Sheet 2 of 5 in Annex B.

- 4.2.5. There are a total of 19 individual trees, 15 groups of trees and 4 hedgerows of 'B' category retention value. T17 and T26 pedunculate oak lie within neighbouring fields to the east and west of the A46, respectively. T27, T29, T30, T31, T32, T35, T36, T38, T39, T41, T44, T45, T47, T48, T50, T53 and T55 (pedunculate oak, sycamore, ash and atlas cedar) are positioned east of the A46 along the Coombe Pool woodland boundary, and are all afforded statutory protection under Rugby Borough Council's TPO No.82 and the Coombe Abbey Conservation Area.
- 4.2.6. The 'B' category groups recorded largely comprise of semi-mature highway embankment planting (soft state) bordering the existing carriageways. These are mixed species groups dominated by overstorey common ash, pedunculate oak, wild cherry, silver birch, field maple and Lombardy poplar with understorey common hawthorn, blackthorn, common elder, common hazel and low-level scrub/vegetation. Collectively, the trees provide screening between the busy highway and neighbouring field land. These large swathes are also likely to be of habitat connectivity. Category 'B' hedgerows are principally mixed native species and follow the existing field boundaries. The hedgerows offer low-level screening and habitat corridors amongst a range of other benefits attributed to rural hedgerows.
- 4.2.7. There are of total of 22 individual trees, 13 groups of trees and 14 hedgerows of 'C' category retention value. The trees comprise a mix of pedunculate oak, crab apple, common ash, common holly, sycamore, goat willow and field maple. The groups mainly comprise of large highway embankment planting (soft state) bordering the carriageways, although of lesser quality and value as those 'B' category groups discussed above. The 'C' category groups are more scrub-like in part, broken and sporadic. Where groups are dominated by ash trees suffering from advanced infection of *Hymenoscyphus fraxineus* (Ash Dieback), these have also been downgraded to 'C' category retention value. The 'C' category hedgerows are mainly those which are broken, incomplete or display large dead sections.
- 4.2.8. The 'C' category trees T37, T42, T43, T46, T49, T51 and T52 and group G29 stands along the Coombe Pool woodland boundary. The trees are all afforded statutory protection under Rugby Borough Council's TPO No.82 and the Coombe Abbey Conservation Area.

4.2.9. The remaining three individual trees and one tree group are of 'U' category retention value and of <10 years functional life remaining. These include T4 common ash, T8 crab apple (dead), T24 common ash and G16 common holly (dead). T4 and T24 are large, mature/over-mature ash displaying advanced infection of *Hymenoscyphus fraxineus* (Ash Dieback), with <25% foliage cover remaining. The trees exhibit both structural and physiological decline. T8 and G16 are dead trees/groups.

4.2.10. A summary of the tree quality assessment is shown in Table 4.1 below.

Table 4.1 Existing tree appraisal and quality assessment

BS5837: 2012 Category	Category 'A' (high quality)	Category 'B' (moderate quality)	Category 'C' (low quality)	Category 'U' (poor quality)	Totals
Trees	T1, T11, T12, T13, T21, T22, T28, T33, T34, T40, T54	T17, T26, T27, T29, T30, T31, T32, T35, T36, T38, T39, T41, T44, T45, T47, T48, T50, T53, T55	T2, T3, T5, T6, T7, T9, T10, T14, T15, T16, T18, T19, T20, T23, T25, T37, T42, T43, T46, T49, T51, T52	T4, T8, T24	55
Groups	-	G1, G2, G4, G5, G7, G8, G10, G12, G13, G17, G19, G20, G22, G23, G24	G3, G6, G9, G11, G14, G15, G18, G21, G25, G26, G27, G28, G29	G16	29
Hedgerows		H2, H6, H7, H13	H1, H3, H4, H5, H8, H9, H10, H11, H12, H14, H15, H16, H17, H18	-	18
Woodlands	W1	-	-	-	1
Totals	12	38	49	4	103

Plate 4.1 View of T1 pedunculate oak adjacent to main access road at Hungerley Hall Farm



Plate 4.2 View of Group G2 from south looking north off Hepworth Road (west of A46)



Plate 4.3 View of T21 pedunculate oak and typical field boundary hedgerow H7 (west of A46)



Plate 4.4 View of G23 highway embankment planting from south looking north (west of A46)



Plate 4.5 View of Coombe Pool Woodland W1 from north looking south (east of A46)



Plate 4.6 View of T29-T33 positioned to the edge of Coombe Pool Woodland W1 (east of A46)



5. Arboricultural impact of the Scheme

5.1. Tree removals

- 5.1.1. The impact assessment evaluates both the direct and indirect effects of the Scheme on existing tree cover. This is further illustrated on the Tree Protection Plans at Annex B.
- 5.1.2. The Scheme would require the removal of 15 individual trees, six groups of trees and one hedgerow. There would also be a part-removal of a further seven groups of trees and eight hedgerows. These comprise of 1 'A' category, 12 'B' category, 21 'C' category and three 'U' category.
- 5.1.3. The Category 'A' tree to be removed is T13 pedunculate oak. This mature specimen is positioned west of the A46, immediately adjacent to the highway embankment planting. Heavy earthworks and level changes are necessary to construct the Scheme. This would be detrimental to its health, vitality, and structural integrity, as such its retention is not considered achievable.
- 5.1.4. The Category 'B' tree to be removed is T17 pedunculate oak. The Category 'B' groups to be removed are G17 mixed species and G19 common holly. The mature tree and groups are positioned west of the A46, establishing from field boundary hedgerows. The trees would require removal due to the impact of the proposed highway layout, construction working zone and proposed embankment planting.
- 5.1.5. T4, T8 and G16 are of Category 'U' retention value. T4 is an over-mature ash which exhibits extensive decline resulting from advanced *Hymenoscyphus fraxineus* (Ash Dieback). The tree would be removed to accommodate the proposed drainage feature close to Hungerley Hall Farm. T8 and G16 are dead trees proposed for removal and would be of no impact to the wider landscape. Dead trees will be re-used or recycled through on-site landscaping or ecological improvement works (ES Chapter 10 (Material Assets and Waste) (TR010066/APP/6.1)).
- 5.1.6. Category 'C' trees to be removed include a variety of species and maturity. The trees are proposed to be removed to accommodate the new highway layout and construction working zone. These are principally of low quality and value within the development context.
- 5.1.7. The part-removals principally comprise of early-mature highway embankment planting groups. The groups are of moderate or low value and relatively easily replaced with new tree planting. This represents an opportunity to enhance species diversity and resilience, especially given the advanced infection of

Hymenoscyphus fraxineus (Ash Dieback) present within the trees/woodland identified within the Order Limits. Further part-removals would be necessary for installing new below ground services including within groups G5 and G13.

- 5.1.8. Where part of a tree group is to be removed, the final extent of tree removal must be determined in conjunction with the Arboricultural Clerk of Work (ACoW). An assessment can be made to determine the stability and suitability of retained trees and to consider the impact of the loss of companion shelter.
- 5.1.9. The loss of the trees would be necessary to achieve the construction of the Scheme. None of the trees proposed for removal are afforded statutory protection by either a TPO or Conservation Area. None of the trees proposed for removal are considered aged or veteran therefore the principals for refusal within the NPPF would not be considered applicable.
- 5.1.10. Tree removals would be mitigated by a proposal of high-quality tree planting and associated landscaping works, which represents an opportunity to enhance the quality, benefits and resilience of trees across the Scheme. The loss of mature hedgerows would also be adequately compensated for within the replanting proposals.

Table 5.1 Tree removals for the Scheme

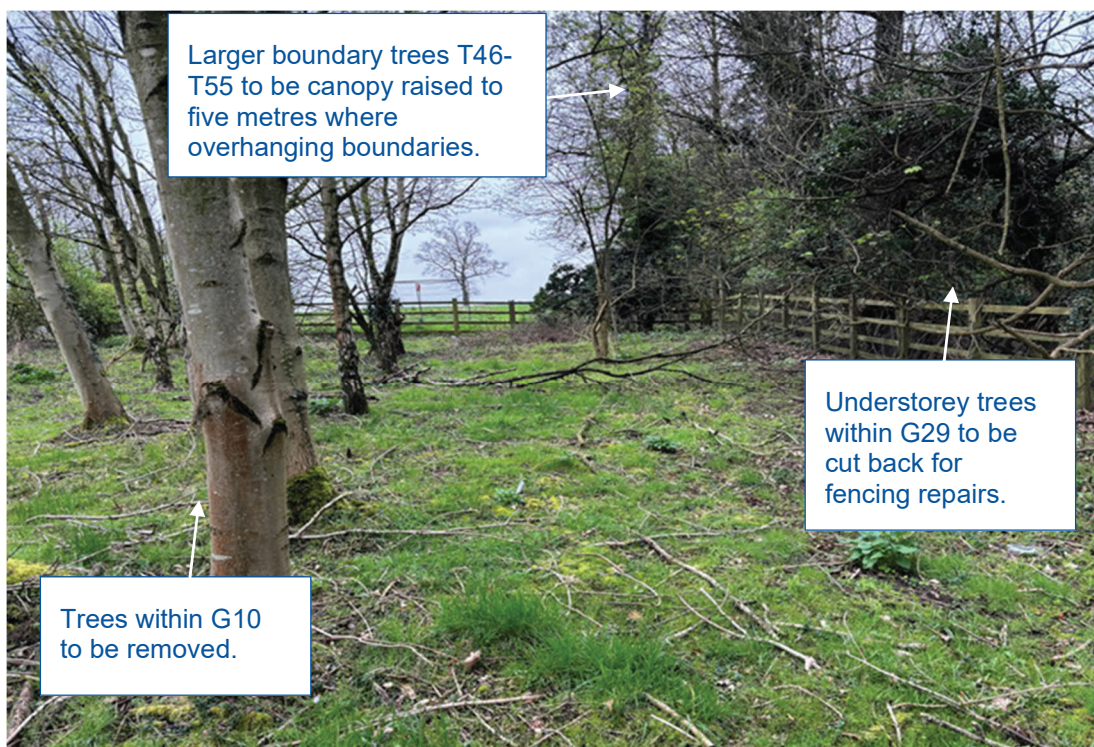
Reason for removal proposed works		Tree retention category				Totals
		'A'	'B'	'C'	'U'	
The Scheme	Remove for Scheme	T13	T17, G17, G19	T2, T6, T7, T9, T14, T15, T16, T18, T19, T20, T23, G14, G15, G18, H3,	T4, T8, G16	22
The Scheme	Part-remove for Scheme	0	G5, G8, G10, G13, G20, H2, H6, H7, H13	G27, G28, H4, H5, H16, H17	0	15
Totals		1	12	21	3	37

6. Arboricultural works

6.1. Facilitation tree works

- 6.1.1. The facilitation pruning works listed below would be necessary for construction access and safe working zones:
- T1 pedunculate oak would require raising of the lower south-east side canopy to allow a five metre clearance over the farm access and field parcel opposite.
 - T46 – T55 common ash, sycamore and atlas cedar (TPO No.82) would require raising of the western / north-western side canopies to allow a five metre clearance over the highway embankment.
 - G29 mixed species group (TPO No.82) would require pruning overhanging branches back to the SSSI boundary where necessary, to repair sections of broken fencing.
- 6.1.2. Canopy raising should be targeted to secondary branches or smaller to achieve the desired clearance from ground level. All pruning should be back to appropriate growth points.
- 6.1.3. Facilitation pruning should be reassessed again during detailed design and the pre-commencement meeting.

Plate 6-1 View of G10 (left) and G29 (right) (east of A46) along the Coombe Pool SSSI boundary



- 6.1.4. All arboricultural works listed within the attached Tree Survey Schedule (Annex A) shall be carried out by suitably qualified, insured and experienced professionals working to BS3998:2010 Tree Works Recommendations. The specialist contactor shall not deviate from the recommendations of the attached Tree Survey Schedule. A directory of Arboricultural Association approved tree surgeons can be found at www.trees.org.uk.
- 6.1.5. Should any further tree works be identified during construction, due to design or temporary works changes, these should first be discussed with the ACoW and no works would be undertaken without the consent of the relevant Local Planning Authority.

6.2. Future tree growth and risk management

- 6.2.1. The nuisance caused by trees can be avoided through appropriate design and planning. The most common conflicts associated with trees are known to be shading, leaves and fruit as well as direct and indirect damage. With careful planning, these problems can be avoided through appropriate tree retention, species selection and Scheme layout.
- 6.2.2. The majority of retained trees are positioned outside of the proposed new highway layout and construction working zone. As such, retained trees would not have a significant future impact on the Scheme.
- 6.2.3. Having well-managed trees (specifically those that do not pose foreseeable harm) is important to ensure that the 'duty of care' which is owed by the owner/occupier is fulfilled. The management of trees in a proactive system would ensure that the owners/occupiers of the Site are fulfilling the 'duty of care' set out within the Occupiers' Liability Acts 1957 and 1984 and also following guidance provided by the National Tree Safety Group (NTSG).
- 6.2.4. Future arboricultural health and safety inspection should be undertaken at regular intervals. The data recorded would provide an electronic inventory of the trees, which can be monitored, updated and also used as a tree management tool for future works. This would ensure a proactive role is adopted to maintain and improve the tree resource in a planned, systematic and integrated approach.

7. Arboricultural method statement

7.1. Arboricultural works schedule

Table 7.1 Arboricultural works schedule

Stage / Timing	Action	Report section
Stage 1 (pre-development)	<p>Appoint ACoW to implement auditable system of monitoring.</p> <p>Implement reporting process for all unforeseen arboricultural incidents and use progress sheet to build up evidence base of good practice.</p> <p>Set out Construction Exclusion Zone (CEZ) and erect tree protection fencing (TPF) to BS5837:2012 specifications as appropriate.</p> <p>Arrange the initial / pre-commencement meeting.</p>	8.2
Stage 2 (during development)	<p>Working within the Root Protection Area (RPA) of retained trees and precautionary methodology to avoid any foreseeable harm.</p> <p>Regular monitoring site visits by ACoW to ensure continued compliance.</p>	8.3
Stage 3 (post development)	<p>Post development inspection to identify any required remedial works.</p> <p>General maintenance / remedial tree works.</p> <p>New tree planting and soft landscaping.</p>	8.4

7.2. Stage 1 – pre-development Arboricultural Clerk of Works

7.2.1. A suitably qualified arboriculturist would be appointed by the developer to act as an ACoW. The ACoW would be engaged to monitor and oversee the implementation of the works required in this report including:

- Initial meeting (pre-commencement) – to ensure all tree protection measures are in place.
- Monitoring visits – regular site visits and to oversee works within tree RPAs and to inform the Site Manager where appropriate measures are not in place.
- Completion meeting – to inspect trees to assess for any required works and to confirm that the development has been sufficiently completed, and the tree protection measures can be removed.

Reporting process and progress sheets

7.2.2. If any damage to either the retained trees or the RPAs is sustained, this would be reported to the Site Manager immediately. At the earliest feasible time, the

Site Manager will inform the ACoW, who would undertake a site visit to assess the impact on the trees and make recommendations for any required works.

- 7.2.3. During the various stages of the development, a record of the completion of the various tree protection works will be kept by the ACoW. This would provide the Applicant with sufficient evidence that all practicable steps have been taken to prevent damage to the trees.
- 7.2.4. A separate progress sheet will be filled in for each completed operation. The original would be kept with the copy of this document that will be retained by the Site Manager.

Construction Exclusion Zone (CEZ) and protective fencing

- 7.2.5. All trees to be retained within the Scheme Order Limits would be protected by barriers and/or ground protection to create a CEZ around their associated RPA. The protective barriers are to be installed prior to any development activity in the vicinity of the construction exclusion zones.
- 7.2.6. The tree protection fence/barrier once erected would not be moved or relocated without written approval from the ACoW. The tree protection area behind the fence/barrier (the CEZ) will be sacrosanct throughout development and no access will be allowed to this area including for example the storage of or moving of materials or plant and machinery.
- 7.2.7. The barriers/fencing on this occasion would be installed as shown at both Figure 2 and Figure 3 of BS5837:2012. The final position and specification of the protective fencing will be confirmed during the final design stages.
- 7.2.8. All-weather notices should be attached to the protective fencing (either rigid plastic or Foamex foamboard) with text such as “Tree Protection Area – Keep Out”. An example is included at Annex C. Once installed, barriers/ground protection should not be removed or altered without prior approval by the ACoW.

Pre-commencement site meeting

- 7.2.9. A pre-commencement site meeting would be undertaken with the Applicant, the Site Manager and the ACoW prior to any on-site works commencing. This meeting will enable the ACoW to inspect the tree protective fencing setup and any other precautions within tree RPAs.
- 7.2.10. Regular site visits would then be undertaken by the ACoW following the initial meeting to ensure protective measures remain in place and the oversee works within tree RPAs.

7.3. Stage 2 – during development

Root Protection Areas (RPAs)

- 7.3.1. The RPA for each tree has been initially plotted as a circle, centred on the base of the stem, with a radius 12 times the stem diameter (measured at 1.5 metres above ground level). For veteran trees, the radius has been increased to 15 times the stem diameter following standing advice from Natural England and The Forestry Commission.
- 7.3.2. Where pre-existing site conditions or other factors indicate that rooting has occurred asymmetrically, a polygon or other area has been produced. Modifications to the rooting area reflect a soundly based arboricultural assessment of the likely root distribution and site-specific ground conditions.
- 7.3.3. No ground works should be undertaken within RPAs without due care in relation to the retained tree(s) and this is to avoid soil compaction, changes in levels or soil contamination which could alter the trees condition and/or stability.
- 7.3.4. The RPA data for each tree is included within the complete Tree Survey Schedule at Annex A and illustrated on the Arboricultural Plans at Annex B.

Working within the RPA of T12 veteran oak

- 7.3.5. There will be a new incursion within the RPA of T12 pedunculate oak. This is a veteran tree with an RPA radius of 26.1 metres (15x the stem diameter in accordance with the current standing advice). The tree is positioned beyond the Order Limits within a field parcel at Hungerley Hall Farm. The existing ground and RPA is continually cultivated around the tree for crop production. Works proposed within the periphery of the veteran RPA should be native hedgerow planting and post and rail fencing only, occurring approximately 23 metres from the main stem. Native planting within the veteran tree buffer zone is in accordance with standing advice recommendations for buffer zones and will contribute to the wider ecological networks.
- 7.3.6. Minor ground works required to facilitate the planting should be undertaken using hand-held tools only under the direct supervision / guidance of the ACoW. Tree protective fencing will be installed to safeguard the entire RPA, until this phase of landscape works is necessary. All plant and vehicles will operate outside of the veteran RPA. The proposed landscaping works will not constitute loss or deterioration of the veteran tree.

Working within the RPA of Coombe Pool SSSI woodland

- 7.3.7. Groundworks will be required to facilitate the new environmental bund and perimeter fencing adjacent to the Coombe Pool SSSI boundary. This will require working within the RPAs of retained trees. All trees positioned within Woodland W1, Group G29 and trees T46-T55 (works area) are afforded statutory protection under Rugby Borough Council's TPO No.82 and the Coombe Abbey Conservation Area.
- 7.3.8. Existing trees positioned upon the highway embankment bund within Group G10 are proposed for removal to accommodate the works. Low overhanging tree branches would be removed and vegetation cut back to facilitate the work as discussed within Section 7.1.
- 7.3.9. Topsoil will be stripped from the slope of the existing highway embankment bund, down towards the SSSI boundary fence line. All machinery will work from National Highways land, outside of tree RPAs. The excavations principally include the removal of made-up ground above the level of the mature tree line. The works will conflict with the periphery of retained tree RPAs only. This will not have a detrimental impact to the heath, vitality, or structural stability of the retained trees. All works on-site will be undertaken under the guidance / supervision of the ACoW and ECoW.
- 7.3.10. Replacement post and rail fencing will be installed along the SSSI boundary line. This will involve working within retained tree RPAs. Temporary ground protection (track matting) will be installed along the National Highways side of the fence, to reduce ground compaction during the works.
- 7.3.11. Where damaged sections of fencing are removed, existing concrete post foundations will be left in situ. Any minor identified roots <25mm diameter will be pruned back with secateurs or a root pruning hand saw. Any significant roots identified >25mm diameter will be avoided and if discovered, post holes may be relocated.
- 7.3.12. New post holes will be lined with a non-porous lining such as a durable polythene to prevent leachates from concrete damaging tree roots. The post holes should be filled with concrete/postcrete just below the formation level. Finally, the polythene lining should be trimmed back and filled with clean topsoil in preparation for fixing the fence panels.
- 7.3.13. The works will be undertaken under the direct supervision / guidance of the ACoW and the ECoW. Tree protective fencing will be installed to safeguard the RPA throughout the construction phase.

- 7.3.14. Should the need for any further RPA incursions be identified during detailed design or pre-construction surveys, the project Arboriculturist should be informed, together with the LPA.

Precautions within the RPAs

- 7.3.15. The removal of existing soft / hard surfacing within tree RPAs must be undertaken using hand-held tools only under the direct supervision / guidance of the ACoW. This will ensure that foreseeable damage does not occur to retained trees during this phase of works.
- 7.3.16. Large roots (>25mm diameter) identified during ground excavations should be retained as such roots may be essential to the tree's health and stability. Should any large diameter roots be identified, the ACoW will be contacted to agree a suitable working methodology and ensure the continuation of on-site works. Roots, while exposed should be immediately wrapped or covered with hessian and kept moist, prior to backfilling which should take place as soon as possible.
- 7.3.17. Minor / fibrous roots identified during ground excavations (<25mm diameter) may be pruned back to an appropriate growth point using sharp bypass secateurs or a root-pruning handsaw.
- 7.3.18. Prior to backfilling, roots should be surrounded with topsoil or uncompacted sharp sand (builders' sand should not be used due to its high salt content, which is toxic to tree roots), or other loose granular fill, before soil or other suitable material is replaced.

Utilities and services

- 7.3.19. Excavation to install below ground services has the potential to result in unacceptable root severance which could be detrimental to tree health, vitality and structural stability.
- 7.3.20. The location of proposed below ground services were determined from the Drainage Plans and informed the Tree Protection Plans at Annex B.
- 7.3.21. As discussed within Section 6.1, clearance of trees within G5 and G13 highway embankment groups will be required. Following this, and prior to ground excavations for the service runs, the tree protective fencing will be installed to prevent any foreseeable damage occurring to trees positioned adjacent to the route of proposed services.
- 7.3.22. The Tree Protection Plans have allowed for a clearance working zone either side of the drainage pipes. Individual trees to be removed for the service runs will be marked for removal prior to construction by the project Arboriculturist. This will

ensure only trees conflicting with the Scheme are removed. It is anticipated that the excavations work will not result in a detrimental impact to the rooting system of adjacent retained trees.

- 7.3.23. Where existing services become redundant within the RPAs of retained trees, the default position is that they are decommissioned and left in situ. Where this is not possible, services are to be removed by winching out from an access/inspection chamber located outside of tree RPAs.
- 7.3.24. Traditional trench excavated utilities should principally be routed outside of tree RPAs. Where this is not possible, it is preferable to keep apparatus together in common ducts or apply trenchless insertion methods within RPAs. In all cases, working shall be drawn up in conjunction with the ACoW and comply with The National Joint Utilities Group (NJUG) Publication (NJUG 10, Volume 4).
- 7.3.25. Service routes must run as far from retained tree stems as practical and be installed to a minimum depth so that the upper one metre of soil remains undisturbed. Service depths must consider soil type and tree species variation to be determined in conjunction with the ACoW. Water pipes must be constructed to be resilient to ingress by tree roots which may require the installation of root barriers.

7.4. Stage 3 – post development

Post development inspection

- 7.4.1. Following the completion of the development, an inspection of the condition of retained trees will be made. These works may include pruning on the grounds of safety and also to remediate where necessary.
- 7.4.2. Where the soil around any tree is found to be compacted, appropriate remediation will be undertaken. This will be prescribed by the ACoW and could include soil aeration or manual digging/forking to loosen the soil increasing drainage and aeration.

Tree planting

- 7.4.3. Following the completion of the development, an inspection of the condition of retained trees will be made. These works may include pruning on the grounds of safety and also to remediate where necessary. To mitigate for the proposed tree removals, new planting will be undertaken as part of the landscaping scheme.
- 7.4.4. All tree planting is to be in accordance with BS8545:2014 Trees – from nursery to independence in the landscape - Recommendations. Trees will be supported with a stake and tie, kept weed free and watered regularly during periods of dry

weather. Aftercare will include regular inspection, irrigation, formative pruning and the checking/adjusting of plating stakes and ties as required. These requirements will form part of the Landscape and Ecology Management Plan which will be developed at detailed design and form part of the Second Iteration EMP, which is secured as Requirement 4, Schedule 2 of the draft DCO **(TR010066/APP/3.1)**.

8. Conclusions and recommendations

- 8.1.1. The Applicant has prepared an arboricultural assessment in support of the Scheme at A46 Coventry Junctions (Walsgrave). This arboricultural survey and report are produced in accordance with BS5837:2012 Trees in Relation to Design, Demolition and Construction: Recommendations.
- 8.1.2. The survey recorded a total of 55 individual trees, 29 groups of trees, 18 hedgerows and one woodland. These comprise of 12 'A' category, 38 'B' category, 49 'C' category and 4 'U' category. One tree (T12 pedunculate oak) is categorised as veteran.
- 8.1.3. The Scheme would require the removal of 15 individual trees, six groups of trees and one hedgerow. There would also be a part-removal of a further seven groups of trees and eight hedgerows. These comprise of 1 'A' category, 12 'B' category, 21 'C' category and three 'U' category.
- 8.1.4. None of the trees proposed for removal are afforded statutory protection by a TPO, Conservation Area, nor considered aged or veteran.
- 8.1.5. The part-removals principally comprise early-mature highway embankment planting groups. The groups are of moderate or low arboricultural value and relatively easily replaced with new tree planting. Where part of a tree group is to be removed, the final extent of tree removal must be determined on-site in conjunction with the ACoW.
- 8.1.6. Facilitation tree pruning would be required to enable construction of the Scheme. Canopy pruning would be necessary to retained trees including T1, T46-T55 and group G29. All arboricultural works shall be carried out by suitably qualified, insured and experienced professionals working to BS3998:2010 Tree Works Recommendations.
- 8.1.7. New native hedgerow planting and timber fencing is proposed within the RPA of T12 pedunculate oak, a veteran tree. Native planting within the veteran tree buffer zone is in accordance with standing advice recommendations for buffer zones and will contribute to the wider ecological networks. Minor groundworks to facilitate the landscaping would not constitute loss or deterioration of this veteran tree.
- 8.1.8. Groundworks would be required to facilitate the new environmental bund and perimeter fencing adjacent to Coombe Pool SSSI woodland boundary. This will require working within the RPAs of retained trees subject to statutory protection. Sensitive working methodologies, temporary ground protection and on-site supervision will ensure that no foreseeable damage occurs to the retained trees.

- 8.1.9. All trees to be retained on the site will be protected by barriers and/or ground protection to create a CEZ around their associated RPA. The protective barriers are to be installed prior to any development activity.

Abbreviations

Abbreviation	Description
AA	Arboricultural Association
ACoW	Arboricultural Clerk of Works
AIA	Arboricultural Impact Assessment
AMS	Arboricultural Method Statement
BAP	Biodiversity Action Plan
BS	British Standard
CEZ	Construction Exclusion Zone
DBH	Diameter at Breast Height
DCO	Development Consent Order
DfT	Department for Transport
ECow	Ecological Clerk of Works
ES	Environmental Statement
ICF	Institute of Chartered Foresters
LBAP	Local Biodiversity Action Plan
LNR	Local Nature Reserves
LPA	Local Planning Authority
NHBC	National House Building Council
NJUG	National Joint Utilities Group
NPPF	National Planning Policy Framework
NPPF	National Planning Policy Framework
NTSG	National Tree Safety Group
RPA	Root Protection Area
SSSI	Site of Special Scientific Interest
TCP	Tree Constraints Plan
TPF	Tree Protection Fencing
TPO	Tree Preservation Order
TPP	Tree Protection Plan

Glossary

Term	Description
ACoW	Arboricultural Clerk of Works: a suitably qualified Arboriculturist appointed by the developer to monitor and oversee the implementation of works on site.
Ancient tree	A tree, much of whose value resides in its exceptional antiquity, so that the conservation of the tree to maximise its longevity is generally paramount.
Ancient woodland	In England, a site that has been worked since 1600 AD and which is therefore unlikely to have been planted originally. Ancient woodland typically supports diverse native flora and fauna.
Arboriculturist	A person who has, through relevant education, training and experience, gained expertise in the field of trees in relation to construction.
CEZ	Construction Exclusion Zone: the part of a development site from which all pedestrians and vehicular movements are excluded by protective fencing, typically to ensure the wellbeing of trees, during site works.
Canopy raising	The removal of lower branches of a tree, whether complete branches or those arising from the lower limbs, to increase the headroom to the base of the crown.
Companion shelter	A term in BS5837:2012 for trees in a group whose crowns have merged to the extent that they provide some shelter to each other.
ECoW	Ecological Clerk of Works: a suitably qualified ecologist appointed by the developer to monitor and oversee the implementation of works on site.
Felling	The cutting down of a tree, generally close to ground level leaving a stump.
Ground protection	Boards or other measures used to spread loading across unsurfaced ground within the tree rooting environment, maintaining tree health and vitality.
Hand dig	Careful soil excavation within the tree rooting environment to expose roots without damaging them using hand tools such as spades, forks, trowels, compressed air and soil vacuums.
RPA	Root Protection Area: a layout design tool indicating the minimum area around a tree deemed to contain sufficient roots and rooting volume to maintain the tree's viability, and where the protection of the roots and soil structure is treated as a priority.
SSSI	Site of Special Scientific Interest: a formal conservation designation usually describes an area that is of particular interest to science due to the rare species of fauna and flora it contains.
TPO	Tree Preservation Order: an order made by a local planning authority to protect a tree, group of trees, area of (scattered) trees or woodland under Part VIII of the Town and Country Planning Act 1990, several amendments have been made, the latest being the Town and Country Planning (Tree Preservation) (England) Regulations 2012. Orders are generally served in the interests of public amenity.
Veteran tree	Trees that, by recognised criteria, show features of biological, cultural or aesthetic value that are characteristic of, but not exclusive to, individuals surviving beyond the typical age range for the species concerned.

References

British Standards Institution. BS 3998:2010 'Tree work – Recommendations'

British Standards Institution. BS 5837:2012 'Trees in Relation to Design, Demolition and Construction - Recommendation'

British Standards Institution. BS 8545:2014 Trees: from nursery to independence in the landscape – Recommendations

Defra. <https://magic.defra.gov.uk/MagicMap.aspx>. Accessed April 2024.

Department for Levelling Up, Housing & Communities (2023). National Planning Policy Framework (NPPF). [online] available at:
https://assets.publishing.service.gov.uk/media/65a11af7e8f5ec000f1f8c46/NPPF_December_2023.pdf Accessed February 2024

Department for Transport. National Networks National Policy Statement (NN NPS). [Online]. Available from:
<https://assets.publishing.service.gov.uk/media/65e9c5ac62ff48001a87b373/national-networks-national-policy-statement-web.pdf>

Her Majesty's Government (UK). (1967). The Forestry Act 1967

Her Majesty's Government (UK). (1990). The Town and Country Planning Act 1990

Her Majesty's Government (UK). (2012) The Town and Country Planning (Tree Preservation) (England) Regulations 2012

Natural England and Forestry Commission Standing Advice. Ancient woodland, ancient trees and veteran trees: advice for making planning decisions, 2022

National House Building Council (NHBC) Standards, 2018. Chapter 4.2: Building Near Trees

National Joint Utilities Group (NJUG) Volume 4, Issue 2, 2007. NJUG Guidelines for the Planning, Installation and Maintenance of Utility Apparatus in Proximity to Trees





National Tree Safety Group (NTSG), 2011. Common sense risk management of trees. Forestry Commission

Ministry of Housing, Communities & Local Government. (2023) National Planning Policy Framework (NPPF).

Philip Wilson. A-Z of tree terms: A companion to British arboriculture. 3rd Edition 2021.

Annex A: Tree Survey Schedule and Methodology

BS5837:2012 Cascade Chart for Tree Quality Assessment

Category and Definition	Criteria (including subcategories where appropriate)			ID Colour on Plan
Trees unsuitable for retention (see Note)				
Category U Those in such a condition that they cannot realistically be retained as living trees in the context of the current land use for longer than 10 years	<ul style="list-style-type: none">• Trees that have a serious, irremediable, structural defect, such that their early loss is expected due to collapse, including those that will become unviable after removal of other category U trees (e.g. where, for whatever reason, the loss of companion shelter cannot be mitigated by pruning);• Trees that are dead or are showing signs of significant, immediate, and irreversible overall decline; and/or• Trees infected with pathogens of significance to the health and/or safety of other trees nearby, or very low-quality trees suppressing adjacent trees of better quality. <p>NOTE: Category U trees can have existing or potential conservation value which it might be desirable to preserve; see 4.5.7.</p>			Dark Red (127-000-000) 
Trees to be considered for retention (see Note)				
	1 - Mainly arboricultural qualities	2 - Mainly landscape qualities	3 - Mainly cultural values, including conservation	
Category A Trees of high quality with an estimated remaining life expectancy of at least 40 years.	Trees that are particularly good examples of their species, especially if rare or unusual; or those that are essential components of groups or formal or semi-formal arboricultural features (e.g. the dominant and/or principal trees within an avenue).	Trees, groups or woodlands of particular visual importance as arboricultural and/or landscape features.	Trees, groups or woodlands of significant conservation, historical, commemorative or other value (e.g. veteran trees or wood-pasture).	Light Green (000-255-000) 
Category B Trees of moderate quality with an estimated remaining life expectancy of at least 20 years.	Trees that might be included in category A, but are downgraded because of impaired condition (e.g. presence of significant though remediable defects, including unsympathetic past management and storm damage), such that they are unlikely to be suitable for retention for beyond 40 years; or trees lacking the special quality necessary to merit the category A designation.	Trees present in numbers, usually growing as groups or woodlands, such that they attract a higher collective rating than they might as individuals; or trees occurring as collectives but situated so as to make little visual contribution to the wider locality.	Trees with material conservation or other cultural value.	Mid Blue (000-000-255) 
Category C Trees of low quality currently in adequate condition with at least 10 years life expectancy, or young trees with a stem diameter below 150mm.	Unremarkable trees of very limited merit or such impaired condition that they do not qualify in higher categories.	Trees present in groups or woodlands, but without this conferring on them significantly greater collective landscape value; and/or trees offering low or only temporary/ transient landscape benefits.	Trees with no material conservation or other cultural value.	Grey (091-091-091) 

Tree Survey Schedule

BS5837:2012 TREE SURVEY SCHEDULE

SURVEY DATE: Sept & Oct 2023, April 2024 SITE: A46 Coventry Junctions (Walsgrave)
SURVEYOR: [REDACTED] CLIENT: Octavius Infrastructure Limited
REFERENCE: HE004820-OIL-EGN-00-SH-LE-30001

TREE PROTECTION STATUS: W1, G29 and all individual trees recorded within Coombe Pool Woodland are protected by RBC TPO No.82 (1985) and the Coombe Abbey CA.

X (Easting)	Y (Northing)	Ref No.	Common Name	Botanical Name	Height (m)	Stem Dia Ø (mm)	Branch Spread (m)				Height & Direction of First Significant Branch (m)	Age Class	Phys Con	Struc Con	General observations	Preliminary recommendations	BS5837 Retention Category	RPA (m²)	RPA Radius (m)
438115	279419	T1	Pedunculate oak	<i>Quercus robur</i>	20	1160	12	12	11	11	3.8-N	Late-Mature	Good	Good	Located north of B4082. Tree under ownership of Hungerley Hall Farm. Large, mature oak. Field boundary specimen establishes from hedgerow adjacent to farm access driveway. Single-stemmed. Dense ivy coverage to base and stem. Heavily weighted, wide-spreading canopy. Large diameter deadwood. High value specimen. Prominent landscape feature.	Sever ivy and allow to dieback. Raise low canopy to allow a 5metre clearance over access road beneath. Remove major deadwood over access driveway.	A1/2	598	13.80
438137	279431	T2	Pedunculate oak	<i>Quercus robur</i>	5	185	2.5	3.2	3.2	2.5	1.2-S	Young	Good	Fair	Located within ownership of Hungerley Hall Farm. Establishing from field boundary immediately adjacent to post and rail fence line. Not captured on topo, position is estimated. Borders Farm access driveway. Small oak. Single-stemmed. NW and SE side canopy spread previously heavily reduced to clear field and driveway. Limited arboricultural merit.	Fell for proposed scheme.	C1/2	14	2.10
438154	279455	T3	Crab apple	<i>Malus sylvestris</i>	8	415	6	4	5.7	6	1.8-S	Mature	Good	Fair	Located within ownership of Hungerley Hall Farm. Establishing from field boundary immediately adjacent to post and rail fence line. Not captured on topo, position is estimated. Borders Farm access driveway. Engulfed in ivy restricting detailed assessment. Structural canopy divides from 1.4metres. East side canopy previously raised over access driveway. Limited individual merit.	Sever ivy and allow to dieback.	C1/2	82	5.10
438180	279423	T4	Common ash	<i>Fraxinus excelsior</i>	16	1440	7.5	7.5	7.5	7.5	5-NW	Late-Mature	Decline	Poor	Located within Hungerley Hall Farm. Stands within field close to access driveway and B4082. Mature Ganoderma sp. decay fungi brackets at stem base. Buttress degradation south side. Continual ploughing of soil within tree rooting environment. Significant dieback throughout canopy. <5% functional leaf cover remaining. Dieback consistent with symptoms of advanced Ash Dieback. No future arboricultural value. Very limited future retention viability.	Fell for proposed scheme.	U	951	17.40
438099	279404	T5	Pedunculate oak	<i>Quercus robur</i>	8	198	3	3	3	3	1.8-NW	Young	Good	Fair	Located adjacent to entrance of Hungerley Hall Farm north of B4082. Not captured on topo, position is estimated. Young oak establishing from field boundary hedgerow. Twin-stemmed. Ivy cover. Radial canopy. Good initial establishment.	Sever ivy and allow to dieback.	C1	18	2.40
438224	279408	T6	Common ash	<i>Fraxinus excelsior</i>	18	770	7	8	7.5	6	4.5-W	Mature	Decline	Fair	Located within ownership of Hungerley Hall Farm. Stands within field north of B4082. Mature ash. Single-stemmed. Sparse foliage cover, branch-tip dieback and extensive deadwood consistent with advanced infection of Ash Dieback. c.50% foliage loss. Limited long-term retention value.	Fell for proposed scheme.	C1/2	272	9.30

BS5837:2012 TREE SURVEY SCHEDULE

SURVEY DATE: Sept & Oct 2023, April 2024 SITE: A46 Coventry Junctions (Walsgrave)

TREE PROTECTION STATUS: W1, G29 and all individual trees recorded within Coombe Pool Woodland are protected by RBC TPO No.82 (1985) and the Coombe Abbey CA

SURVEYOR: [REDACTED] CLIENT: Octavius Infrastructure Limited

REFERENCE: HE004820-OIL-EGN-00-SH-LE-30001

X (Easting)	Y (Northing)	Ref No.	Common Name	Botanical Name	Height (m)	Stem Dia Ø (mm)	Branch Spread (m)				Height & Direction of First Significant Branch (m)	Age Class	Phys Con	Struc Con	General observations	Preliminary recommendations	BS5837 Retention Category	RPA (m²)	RPA Radius (m)
438428	279422	T7	Common holly	<i>Ilex aquifolium</i>	5	200	2	2	2	2	1.5-N	Semi- mature	Fair	Fair	Located within ownership of Hungerley Hall Farm. Not captured on topo, position is estimated. Small field boundary holly establishes from end of hedgerow. Vegetation at base. Canopy width previously reduced. Limited individual merit.	Fell for proposed scheme.	C1	18	2.40
438423	279432	T8	Crab apple	<i>Malus sylvestris</i>	3	450	1	8	7	1	0.2-SE	Mature	Dead	Poor	Located within ownership of Hungerley Hall Farm. Dead tree which has fallen in a SE direction and lies in situ. No future arboricultural value.	Fell for proposed scheme.	U	92	5.40
438446	279441	T9	Common holly	<i>Ilex aquifolium</i>	8	455	5	4	4	3.8	2.2-SE	Mature	Fair	Fair	Located within ownership of Hungerley Hall Farm. Mature holly within wider group feature. Single-stemmed. Structural canopy divides from 1.8metres. Foliage cover is slightly sparse in part. Limited individual merit.	Fell for proposed scheme.	C1/2	92	5.40
438361	279590	T10	Sycamore	<i>Acer pseudoplatanus</i>	11	351	4	5	3.8	3.7	2-N	Semi- mature	Good	Fair	Located within ownership of Hungerley Hall Farm. Establishing from hedgerow west of site. Close by mature oak further west. Stems trifurcate from base. Radial dense canopy. Limited arboricultural value.	Fell for proposed scheme.	C1/2	55	4.20
438355	279597	T11	Pedunculate oak	<i>Quercus robur</i>	13	1230	6.5	7.4	5.5	6.2	1-SW	Late- mature	Fair	Fair	Located within ownership of Hungerley Hall Farm. Old field boundary oak establishing from field boundary ditch network adjacent to hedgerow west of site. Single-stemmed. Previous branch failures, suspended branches and large deadwood. Central/upper canopy is retrenching and tree is beginning to veteranise. Lower compact canopy now forming. High landscape and likely ecological value.	No works required.	A1/2	679	14.70
438474	279815	T12	Pedunculate oak	<i>Quercus robur</i>	20	1740	11	13	13	11	5-E	Veteran	Fair	Fair	Located within ownership of Hungerley Hall Farm. Stands within field north of farm buildings. Veteran age oak. Prominent buttressing NW side. Large stem girth. Stem lean to east. Structural canopy divides from 5metres. Large previous limb failure at crown break west side. Large sections of deadwood. Heavily weighted lateral limbs. Prominent landscape feature specimen. Likely ecological benefit. High value specimen.	No works required.	A1/2/3	2140	28.10
438626	279705	T13	Pedunculate oak	<i>Quercus robur</i>	16	785	7.2	7	7.4	7.2	3-W	Mature	Good	Good	Located under ownership of Hungerley Hall Farm. Mature oak positioned between highway embankment and field track. Basal flare. Single-stemmed. Radial, dense canopy. Potential long-term contribution.	Fell for proposed scheme.	A1/2	272	9.30
438705	279898	T14	Pedunculate oak	<i>Quercus robur</i>	10	280	2	2	2	3	3-N	Young	Good	Fair	Located west of A46. Establishing from hedgerow dividing Hungerley Hall Farm and Walsgrave Hill Farm. Twin-stemmed, small oak. Limited individual merit.	Fell for proposed scheme.	C1/2	34	3.30

BS5837:2012 TREE SURVEY SCHEDULE

SURVEY DATE: Sept & Oct 2023, April 2024 **SITE:** A46 Coventry Junctions (Walsgrave)
SURVEYOR: [REDACTED] **CLIENT:** Octavius Infrastructure Limited
REFERENCE: HE604820-OIL-EGN-00-SH-LE-30001

TREE PROTECTION STATUS: W1, G29 and all individual trees recorded within Coombe Pool Woodland are protected by RBC TPO No.82 (1985) and the Coombe Abbey CA

X (Easting)	Y (Northing)	Ref No.	Common Name	Botanical Name	Height (m)	Stem Dia Ø (mm)	Branch Spread (m)				Height & Direction of First Significant Branch (m)	Age Class	Phys Con	Struc Con	General observations	Preliminary recommendations	BS5837 Retention Category	RPA (m²)	RPA Radius (m)
438898	279897	T15	Goat willow	<i>Salix caprea</i>	9	400	5	5	4	5	1.5-E	Early- mature	Good	Fair	Located west of A46. Establishing from hedgerow dividing Hungerley Hall Farm and Walsgrave Hill Farm. Established willow. Forms part of wider group from hedgerow. Limited arboricultural merit.	Fell for proposed scheme.	C1/2	72	4.80
438876	279889	T16	Common ash	<i>Fraxinus excelsior</i>	12	395	5.8	7	5	6.1	3.7-S	Early- mature	Fair	Fair	Located west of A46. Establishing from hedgerow dividing Hungerley Hall Farm and Walsgrave Hill Farm. Ash forming part of wider linear group. Single-stemmed. Radial canopy. Minor sporadic branch-tip dieback consistent with early infection of Ash Dieback, <25% foliage loss at time of assessment.	Fell for proposed scheme.	C1/2	72	4.80
438864	279886	T17	Pedunculate oak	<i>Quercus robur</i>	14	885	6.5	6.4	5.1	6	3-S	Mature	Good	Fair	Located west of A46. Establishing from hedgerow dividing Hungerley Hall Farm and Walsgrave Hill Farm. Mature oak. Decay cavity to stem base north side, hollowing within. Dense ivy cover to base, stem and structural canopy. Loss of central leader at 5-6metres. Dense canopy continuous with adjacent trees. Moderate quality specimen.	Fell for proposed scheme.	B1/2	346	10.50
438825	279877	T18	Field maple	<i>Acer campestre</i>	6	200	3.8	3.8	1.5	3.5	1.4-NW	Early- mature	Fair	Fair	Located west of A46. Establishing from hedgerow dividing Hungerley Hall Farm and Walsgrave Hill Farm. Small field maple. Ivy cover. Heavy pruning to south side canopy. Squat form. Limited individual merit.	Fell for proposed scheme.	C1/2	28	3.00
438589	279890	T19	Common ash	<i>Fraxinus excelsior</i>	12	620	7	9.4	8.5	6.3	4-S	Mature	Decline	Fair	Located west of A46. Establishing from hedgerow dividing Hungerley Hall Farm and Walsgrave Hill Farm. Mature ash. Single-stemmed. Canopy bias to east over field. Foliage density thinning with dieback and extensive deadwood consistent with symptoms of Ash Dieback. Limited long-term retention viability.	Fell for proposed scheme.	C1/2	177	7.50
438584	279900	T20	Common ash	<i>Fraxinus excelsior</i>	13	775	7	7.4	7.7	6.3	3-NE	Mature	Decline	Fair	Located west of A46. Establishing from hedgerow dividing Hungerley Hall Farm and Walsgrave Hill Farm. Mature ash. Multi-stemmed. Dead elm stems at stem base. Dense ivy cover. Thinning of canopy approx. 50% foliage dieback. Symptoms consistent with Ash Dieback. Limited future long-term retention viability.	Fell for proposed scheme.	C1/2	272	9.30
438880	280164	T21	Pedunculate oak	<i>Quercus robur</i>	13	742	8	8.3	6.7	9	1.6-NE	Mature	Good	Fair	Located west of A46. Establishing from hedgerow under ownership of Walsgrave Hill Farm. Not captured on topo, position is estimated. Mature hedgerow oak. Twin-stemmed from base. Dense, radial canopy. Potential long-term landscape contribution.	No works required.	A1/2	254	9.00

BS5837:2012 TREE SURVEY SCHEDULE

SURVEY DATE: Sept & Oct 2023, April 2024 SITE: A46 Coventry Junctions (Walsgrave)

TREE PROTECTION STATUS: W1, G29 and all individual trees recorded within Coombe Pool Woodland are protected by RBC TPO No.82 (1985) and the Coombe Abbey CA.

SURVEYOR: [REDACTED] CLIENT: Octavius Infrastructure Limited

REFERENCE: HE004820-OIL-EGN-00-SH-LE-30001

X (Easting)	Y (Northing)	Ref No.	Common Name	Botanical Name	Height (m)	Stem Dia Ø (mm)	Branch Spread (m)				Height & Direction of First Significant Branch (m)	Age Class	Phys Con	Struc Con	General observations	Preliminary recommendations	BS5837 Retention Category	RPA (m²)	RPA Radius (m)
438856	280674	T22	Pedunculate oak	<i>Quercus robur</i>	13	825	4.5	6.6	8.5	6.2	3.8-S	Mature	Good	Fair	Located off-site west of A46. Mature field boundary oak establishing from hedgerow and adjacent access track. Not captured on topo, position is estimated. Basal stem cavity east side, degradation within. Large bark wound to east side stem from base to crown break. Dense canopy. Prominent landscape specimen. Likely habitat value.	No works required.	A1/2	308	9.90
438783	279914	T23	Common ash	<i>Fraxinus excelsior</i>	11	465	4.2	5.3	5.4	5	3.5-S	Early-mature	Fair	Fair	Located east of A46. Individual ash establishing from hedgerow close to highway embankment planting. Single-stemmed. Main stem bifurcates from 3.6metres. Foliage density quite thin c.50-75% cover at time of assessment. Dieback consistent with infection of Ash Dieback. Limited long-term retention viability.	Fell for proposed scheme.	C1/2	102	5.70
438671	279583	T24	Common ash	<i>Fraxinus excelsior</i>	15	720	5.5	6.3	7.4	3.6	3.6-E	Mature	Decline	Poor	Located east of A46. Individual ash establishing close to field margin. Ploughing within 1metre of stem. Single-stemmed. Inonotus hispidus bracket to stem at 2.2metres west side. Woodpecker holes, degraded limbs, suspended / broken branches and deadwood to structural canopy. Very sparse foliage density <25% remains. Physiological decline consistent with advanced infection of Ash Dieback. Tree exhibits both structural and physiological decline. Limited future retention viability.	Monitor physiological health annually due to presence of Ash Dieback.	U	238	8.70
438735	279599	T25	Common ash	<i>Fraxinus excelsior</i>	15	625	7.7	8	6.8	7.5	4.2-SW	Mature	Fair	Fair	Located east of A46. Individual ash establishing close to field margin. Individual ash. Basal flare. Inonotus hispidus decay fungi brackets to main stem at 3metres east side. Previous branch failures to structural canopy. Canopy slightly sparse c.25% foliage loss. Branch-tip dieback consistent with early infection of Ash Dieback.	Monitor physiological health annually due to presence of Ash Dieback.	C1/2	177	7.50
438582	279421	T26	Pedunculate oak	<i>Quercus robur</i>	15	820	7	7.3	6.6	6.7	3.7-NW	Mature	Fair	Fair	Located east of A46. Tree stands close to field margin and neighbouring Coombe Pool. Mature individual oak. Ploughing within 1metre of stem base. Basal flare. Bleeding lesions to main stem indicate physiological stress. Main stem bifurcates from 3metres. Relatively dense canopy. Prominent landscape specimen.	No works required.	B1/2	308	9.90
438465	279044	T27 (TPO)	Pedunculate oak	<i>Quercus robur</i>	18	535	5	4.4	3	9	5.6-SW	Mat	Good	Fair	TREE PROTECTED BY RUGBY BOROUGH COUNCIL TPO NO.69. Positioned to margin of Coombe Pool woodland bordering highway embankment. Forms from edge of soil mound. Single-stemmed. Subordinate canopy bias to northwest. Moderate value specimen.	No works required.	B1/2	125	6.30

BS5837:2012 TREE SURVEY SCHEDULE

SURVEY DATE: Sept & Oct 2023, April 2024 SITE: A46 Coventry Junctions (Walsgrave)

TREE PROTECTION STATUS: W1, G29 and all individual trees recorded within Coombe Pool Woodland are protected by RBC TPO No.82 (1985) and the Coombe Abbey CA.

SURVEYOR: [REDACTED] CLIENT: Octavius Infrastructure Limited

REFERENCE: HE604820-OIL-EGN-00-SH-LE-30001

X (Easting)	Y (Northing)	Ref No.	Common Name	Botanical Name	Height (m)	Stem Dia Ø (mm)	Branch Spread (m)				Height & Direction of First Significant Branch (m)	Age Class	Phys Con	Struc Con	General observations	Preliminary recommendations	BS5837 Retention Category	RPA (m²)	RPA Radius (m)
438459	279062	T28 (TPO)	Pedunculate oak	<i>Quercus robur</i>	18	854.7	8	6	9	10	3-SE	Mat	Good	Fair	TREE PROTECTED BY RUGBY BOROUGH COUNCIL TPO NO.69. Positioned to margin of Coombe Pool woodland bordering highway embankment. Twin-stemmed from base. Wide-spreading canopy. Prominent specimen.	No works required.	A1/2	327	10.20
438452	279073	T29 (TPO)	Pedunculate oak	<i>Quercus robur</i>	18	555	6	7	6	9	2.5-NW	Mat	Good	Fair	TREE PROTECTED BY RUGBY BOROUGH COUNCIL TPO NO.69. Positioned to margin of Coombe Pool woodland bordering highway embankment. Single-stemmed. Canopy continuous with adjacent tree. Moderate quality specimen.	No works required.	B1/2	137	6.60
438448	279081	T30 (TPO)	Pedunculate oak	<i>Quercus robur</i>	16	575	3	3	6	8	6.2-W	Mat	Fair	Fair	TREE PROTECTED BY RUGBY BOROUGH COUNCIL TPO NO.69. Positioned to margin of Coombe Pool woodland bordering highway embankment. Single-stemmed. Forms part of wider cluster of mature oaks. Quite suppressed form. Canopy continuous with adjacent trees. Moderate value specimen.	No works required.	B1/2	150	6.90
438448	279084	T31 (TPO)	Pedunculate oak	<i>Quercus robur</i>	16	490	3	2	6	8.5	6-W	Mat	Fair	Fair	TREE PROTECTED BY RUGBY BOROUGH COUNCIL TPO NO.69. Positioned to margin of Coombe Pool woodland bordering highway embankment. Single-stemmed. Forms part of wider cluster of mature oaks. Quite suppressed form. Canopy continuous with adjacent trees. Moderate value specimen.	No works required.	B1/2	113	6.00
438448	279088	T32 (TPO)	Pedunculate oak	<i>Quercus robur</i>	17	525	8	7	2	9	3-N	Mat	Good	Fair	TREE PROTECTED BY RUGBY BOROUGH COUNCIL TPO NO.69. Positioned to margin of Coombe Pool woodland bordering highway embankment. Single-stemmed. Forms part of wider cluster of mature oaks. Quite suppressed form. Canopy continuous with adjacent trees. Moderate value specimen.	No works required.	B1/2	125	6.30
438452	279085	T33 (TPO)	Pedunculate oak	<i>Quercus robur</i>	20	880	7.6	7.8	7.4	8	4.5-S	Mat	Good	Good	TREE PROTECTED BY RUGBY BOROUGH COUNCIL TPO NO.69. Positioned to margin of Coombe Pool woodland bordering highway embankment. Large mature oak. Dominant tree within wider group. Single-stemmed. Radial canopy. High individual quality.	No works required.	A1/2	346	10.50
438441	279110	T34 (TPO)	Atlas cedar	<i>Cedrus atlantica</i>	27	1050	4	8	8	5	5.2-S	Mat	Good	Fair	TREE PROTECTED BY RUGBY BOROUGH COUNCIL TPO NO.69. Positioned to margin of Coombe Pool woodland bordering highway embankment. Large mature cedar. Stands close to neighbouring sycamore. Basal stem wounds, likely underlying decay. Tall, slender form. Dense foliage cover. High value individual.	No works required.	A1/2	499	12.60

BS5837:2012 TREE SURVEY SCHEDULE

SURVEY DATE: Sept & Oct 2023, April 2024 SITE: A46 Coventry Junctions (Walsgrave)

TREE PROTECTION STATUS: W1, G29 and all individual trees recorded within Coombe Pool Woodland are protected by RBC TPO No.82 (1985) and the Coombe Abbey CA.

SURVEYOR: [REDACTED]

CLIENT: Octavius Infrastructure Limited

REFERENCE: HE604820-OIL-EGN-00-SH-LE-30001

X (Easting)	Y (Northing)	Ref No.	Common Name	Botanical Name	Height (m)	Stem Dia Ø (mm)	Branch N	Spread E	(m) S	W	Height & Direction of First Significant Branch (m)	Age Class	Phys Con	Struc Con	General observations	Preliminary recommendations	BS5837 Retention Category	RPA (m²)	RPA Radius (m)
438440	279113	T35 (TPO)	Sycamore	<i>Acer pseudoplatanus</i>	20	705	8	5	4	8.5	2-N	Mat	Good	Fair	TREE PROTECTED BY RUGBY BOROUGH COUNCIL TPO NO.69. Positioned to margin of Coombe Pool woodland bordering highway embankment. Single-stemmed. Main stem divides from codominant union at 4metres. Subordinate canopy, mutually suppressed by larger adjacent cedar. Moderate quality specimen.	No works required.	B1/2	222	8.40
438437	279129	T36 (TPO)	Sycamore	<i>Acer pseudoplatanus</i>	22	1080	7.7	6.8	7.8	7.5	4-NW	Mat	Fair	Fair	TREE PROTECTED BY RUGBY BOROUGH COUNCIL TPO NO.69. Positioned to margin of Coombe Pool woodland bordering highway embankment. Stems trifurcate from base. Water pooling between stem unions at base, potential underlying decay. Low canopy previously raised. Squirrel damage to canopy.	No works required.	B1/2	523	12.90
438433	279140	T37 (TPO)	Sycamore	<i>Acer pseudoplatanus</i>	18	454.5	3.5	4	4.4	6	3.3-W	E/Mat	Fair	Poor	TREE PROTECTED BY RUGBY BOROUGH COUNCIL TPO NO.69. Positioned to margin of Coombe Pool woodland bordering highway embankment. Codominant stem union divides from 1.8metres, stem fuse together above union at 2metres. Suppressed form. Extensive squirrel damage to canopy. Low individual merit.	No works required.	C1/2	92	5.40
438436	279145	T38 (TPO)	Sycamore	<i>Acer pseudoplatanus</i>	20	875	6	5	4	6.5	2.2-W	Mat	Good	Fair	TREE PROTECTED BY RUGBY BOROUGH COUNCIL TPO NO.69. Positioned to margin of Coombe Pool woodland bordering highway embankment. Single-stemmed. Ivy clad. Slender form. Squirrel damage to canopy.	No works required.	B1/2	346	10.50
438432	279157	T39 (TPO)	Sycamore	<i>Acer pseudoplatanus</i>	18	669.9	5.6	5.5	4.4	6.8	4.2-W	Mat	Fair	Fair	TREE PROTECTED BY RUGBY BOROUGH COUNCIL TPO NO.69. Positioned to margin of Coombe Pool woodland bordering highway embankment. Twin-stemmed from base. Ivy cover. Squirrel damage to canopy.	No works required.	B1/2	206	8.10
438430	279167	T40 (TPO)	Pedunculate oak	<i>Quercus robur</i>	20	925	11	7.2	9.2	12.5	6.4-N	Mat	Good	Good	TREE PROTECTED BY RUGBY BOROUGH COUNCIL TPO NO.69. Positioned to margin of Coombe Pool woodland bordering highway embankment. Large mature oak. Single-stemmed. Wide-spreading canopy. High value individual.	No works required.	A1/2	387	11.10
438430	279176	T41 (TPO)	Common ash	<i>Fraxinus excelsior</i>	17	500	8.5	7	4	8.5	3.3-W	E/Mat	Fair	Fair	TREE PROTECTED BY RUGBY BOROUGH COUNCIL TPO NO.69. Positioned to margin of Coombe Pool woodland bordering highway embankment. Single-stemmed. Slender form. Moderate value ash.	No works required.	B1/2	113	6.00

BS5837:2012 TREE SURVEY SCHEDULE

SURVEY DATE: Sept & Oct 2023, April 2024 **SITE:** A46 Coventry Junctions (Walsgrave)
SURVEYOR: [REDACTED] **CLIENT:** Octavius Infrastructure Limited
REFERENCE: HE604820-OIL-EGN-00-SH-LE-30001

TREE PROTECTION STATUS: W1, G29 and all individual trees recorded within Coombe Pool Woodland are protected by RBC TPO No.82 (1985) and the Coombe Abbey CA.

X (Easting)	Y (Northing)	Ref No.	Common Name	Botanical Name	Height (m)	Stem Dia Ø (mm)	Branch Spread (m)				Height & Direction of First Significant Branch (m)	Age Class	Phys Con	Struc Con	General observations	Preliminary recommendations	BS5837 Retention Category	RPA (m²)	RPA Radius (m)
438427	279185	T42	Common ash	<i>Fraxinus excelsior</i>	14	250	4	3	2	5.5	5-SW	S/Mat	Fair	Fair	Positioned to margin of Coombe Pool woodland. Establishes from highway embankment side of fence line. Forms pair with adjacent similar ash. Slender form. Limited individual merit.	No works required.	C1/2	28	3.00
438427	279188	T43	Common ash	<i>Fraxinus excelsior</i>	12	215	5.7	2.5	2	5	2-N	S/Mat	Fair	Fair	Positioned to margin of Coombe Pool woodland. Establishes from highway embankment side of fence line. Forms pair with adjacent similar ash. Slender form. Limited individual merit.	No works required.	C1/2	23	2.70
438430	279200	T44 (TPO)	Common ash	<i>Fraxinus excelsior</i>	22	1150	10	9	8	10	6-W	Mat	Fair	Fair	TREE PROTECTED BY RUGBY BOROUGH COUNCIL TPO NO.89. Positioned to margin of Coombe Pool woodland bordering highway embankment. Large mature ash. Ivy cover. Main stem trifurcates from 1.4metres. Previous stem failure at 2metres northwest side. Wide-spreading canopy. Multiple Inonotus hispidus decay fungi brackets beneath canopy drip line. Indicates decay throughout structural canopy.	No works required.	B1/2	598	13.80
438428	279213	T45 (TPO)	Common ash	<i>Fraxinus excelsior</i>	15	760	7	4	3.5	7	3-NW	Mat	Good	Fair	TREE PROTECTED BY RUGBY BOROUGH COUNCIL TPO NO.89. Positioned to margin of Coombe Pool woodland bordering highway embankment. Mature ash. Structural canopy divides from 1.5metres. Ivy cover. Slender form. Moderate value specimen.	No works required.	B1/2	254	9.00
438427	279239	T46 (TPO)	Common ash	<i>Fraxinus excelsior</i>	12	466.2	5	4	5	5.7	1.5-NW	E/Mat	Fair	Fair	TREE PROTECTED BY RUGBY BOROUGH COUNCIL TPO NO.89. Positioned to margin of Coombe Pool woodland bordering highway embankment. Twin-stemmed ash. Larger stem divides further at 1.7metres. Suppressed form. Limited individual merit.	Raise low west side canopy to allow a 5metre clearance over highway embankment.	C1/2	102	5.70
438429	279262	T47 (TPO)	Sycamore	<i>Acer pseudoplatanus</i>	13	735	8.7	6	7	7.6	5-N	Mat	Good	Fair	TREE PROTECTED BY RUGBY BOROUGH COUNCIL TPO NO.89. Positioned to margin of Coombe Pool woodland bordering highway embankment. Single-stemmed. Ivy clad. Quite squat form. Minor squirrel damage to canopy.	Raise low west side canopy to allow a 5metre clearance over highway embankment.	B1/2	238	8.70
438434	279280	T48 (TPO)	Sycamore	<i>Acer pseudoplatanus</i>	16	695	6.4	4	7.8	7.8	4-N	Mat	Fair	Good	TREE PROTECTED BY RUGBY BOROUGH COUNCIL TPO NO.89. Positioned to margin of Coombe Pool woodland bordering highway embankment. Single-stemmed. Ivy clad. Quite squat form. Minor squirrel damage to canopy.	Raise low west side canopy to allow a 5metre clearance over highway embankment.	B1/2	222	8.40

BS5837:2012 TREE SURVEY SCHEDULE

SURVEY DATE: Sept & Oct 2023, April 2024 SITE: A46 Coventry Junctions (Walsgrave)

TREE PROTECTION STATUS: W1, G29 and all individual trees recorded within Coombe Pool Woodland are protected by RBC TPO No.82 (1985) and the Coombe Abbey CA.

SURVEYOR: [REDACTED]

CLIENT: Octavius Infrastructure Limited

REFERENCE: HE604820-OIL-EGN-00-SH-LE-30001

X (Easting)	Y (Northing)	Ref No.	Common Name	Botanical Name	Height (m)	Stem Dia Ø (mm)	Branch Spread (m) N E S W	Height & Direction of First Significant Branch (m)	Age Class	Phys Con	Struc Con	General observations	Preliminary recommendations	BS5837 Retention Category	RPA (m²)	RPA Radius (m)
438440	279304	T49 (TPO)	Sycamore	<i>Acer pseudoplatanus</i>	9	383.3	3.7 2.5 3 6	2-W	S/Mat	Fair	Poor	TREE PROTECTED BY RUGBY BOROUGH COUNCIL TPO NO.69. Positioned to margin of Coombe Pool woodland bordering highway embankment. Not captured on topographical survey, location is estimated. Stands 3.2metres from boundary fence line. Semi-mature sycamore. Multi-stemmed. Almost horizontal stem orientated to west side encroaches low over highway embankment. Ivy clad. Suppressed form. Limited individual merit.	Raise low west side canopy to allow a 5metre clearance over highway embankment.	C1/2	64	4.50
438443	279314	T50 (TPO)	Common ash	<i>Fraxinus excelsior</i>	20	615	7 4.8 5 8	4.5-NW	Mat	Fair	Fair	TREE PROTECTED BY RUGBY BOROUGH COUNCIL TPO NO.69. Positioned to margin of Coombe Pool woodland bordering highway embankment. Mature ash forms part of wider group. Ivy clad. Single-stemmed. Canopy continuous with adjacent trees and bias towards northwest.	Raise low west side canopy to allow a 5metre clearance over highway embankment.	B1/2	177	7.50
438446	279318	T51 (TPO)	Sycamore	<i>Acer pseudoplatanus</i>	13	544.5	7 6 4 8	6-NW	Mat	Fair	Fair	TREE PROTECTED BY RUGBY BOROUGH COUNCIL TPO NO.69. Positioned to margin of Coombe Pool woodland bordering highway embankment. Twin-stemmed from base. Ivy clad. Quite suppressed given central group position. Subordinate canopy shows squirrel damage. Limited individual merit.	Raise low west side canopy to allow a 5metre clearance over highway embankment.	C1/2	137	6.60
438451	279325	T52 (TPO)	Sycamore	<i>Acer pseudoplatanus</i>	16	635	3.5 3.5 4.5 5.4	6-SW	Mat	Fair	Fair	TREE PROTECTED BY RUGBY BOROUGH COUNCIL TPO NO.69. Positioned to margin of Coombe Pool woodland bordering highway embankment. Twin-stemmed from 1.8metres. Ivy clad. Quite suppressed given central group position. Subordinate canopy shows squirrel damage. Limited individual merit.	Raise low west side canopy to allow a 5metre clearance over highway embankment.	C1/2	177	7.50
438455	279329	T53 (TPO)	Sycamore	<i>Acer pseudoplatanus</i>	17	670	8.3 6.4 8 9	5.5-NW	Mat	Fair	Fair	TREE PROTECTED BY RUGBY BOROUGH COUNCIL TPO NO.69. Positioned to margin of Coombe Pool woodland bordering highway embankment. Single-stemmed. Ivy clad. Slightly better form in comparison to those adjacent sycamore. Canopy shows minor squirrel damage.	Raise low west / northwest side canopy to allow a 5metre clearance over highway embankment.	B1/2	206	8.10
438463	279335	T54 (TPO)	Atlas cedar	<i>Cedrus atlantica</i>	25	1010	6.7 7.8 7.8 6.1	2.2-SW	Mat	Good	Fair	TREE PROTECTED BY RUGBY BOROUGH COUNCIL TPO NO.69. Positioned to margin of Coombe Pool woodland bordering highway embankment. Large mature cedar. Single-stemmed. Slender form. Multiple dead branches to lower proportion of canopy. Previous storm damaged branches. Highly prominent tree.	Raise low west / northwest side canopy to allow a 5metre clearance over highway embankment.	A1/2	452	12.00

BS5837:2012 TREE SURVEY SCHEDULE

SURVEY DATE: Sept & Oct 2023, April 2024 **SITE:** A46 Coventry Junctions (Walsgrave)

TREE PROTECTION STATUS: W1, G29 and all individual trees recorded within Coombe Pool Woodland are protected by RBC TPO No.82 (1985) and the Coombe Abbey CA.

SURVEYOR: XXXXXXXXXX **CLIENT:** Octavius Infrastructure Limited

REFERENCE: HE604820-OIL-EGN-00-SH-LE-30001

X (Easting)	Y (Northing)	Ref No.	Common Name	Botanical Name	Height (m)	Stem Dia Ø (mm)	Branch Spread (m)				Height & Direction of First Significant Branch (m)	Age Class	Phys Con	Struc Con	General observations	Preliminary recommendations	BS5837 Retention Category	RPA (m²)	RPA Radius (m)
438480	279346	T55 (TPO)	Atlas cedar	<i>Cedrus atlantica</i>	23	850	5.3	6.8	6.8	5.5	7-W	Mat	Good	Fair	TREE PROTECTED BY RUGBY BOROUGH COUNCIL TPO NO.89. Positioned to margin of Coombe Pool woodland bordering highway embankment. Not captured on topographical survey, position is estimated. Stands 2.2metres from post and rail fence. Large, mature cedar. Single-stemmed. Large bark wound to lower east side stem, some degradation of exposed heartwood, potential underlying decay. Single-stemmed. Tall, slender form. Multiple dead branches to lower proportion of canopy. Previous storm damaged branches to canopy. Prominent woodland boundary tree.	Raise low west / northwest side canopy to allow a 5metre clearance over highway embankment.	B1/2	327	10.20
438627	278600	G1	Grey alder Silver birch Common hazel Common hawthorn Common ash Wild cherry Pedunculate oak Guelder rose	<i>Alnus incana</i> <i>Betula pendula</i> <i>Corylus avellana</i> <i>Crataegus monogyna</i> <i>Fraxinus excelsior</i> <i>Prunus avium</i> <i>Quercus robur</i> <i>Viburnum opulus</i>	17	385	4 av.				0.2-E	Early-mature	Mixed	Fair	Located to west side of A46, south of B4428 Brinklow Road. Borders residential housing public open space. Linear group of highway verge planting (soft state) immediately bordering carriageway. Group height differentiates. Extends west to post and rail fence line. Native broadleaf mix. Proportion of ash display branch-tip dieback and extensive deadwood consistent with early and mid onset of ash dieback 50-75% foliage cover at time of assessment. Important screening from busy highway. Likely wildlife corridor. Moderate collective value.	Monitor physiological health annually due to presence of Ash Dieback.	B2	125	6.30
438612	278596	G2	Silver birch Common hazel Common hawthorn Common ash Wild cherry Dog rose Elder Whitebeam Rowan Guelder rose	<i>Betula pendula</i> <i>Corylus avellana</i> <i>Crataegus monogyna</i> <i>Fraxinus excelsior</i> <i>Prunus avium</i> <i>Rosa canina</i> <i>Sambucus nigra</i> <i>Sorbus aria</i> <i>Sorbus aucuparia</i> <i>Viburnum opulus</i>	17	385	4 av.				0.2-E	Early-mature	Mixed	Fair	Located off-site beyond west side of A46 south of B4428 Brinklow Road. Borders residential housing public open space. Linear group of secondary highway screening. Group height differentiates. Extends west of post and rail fence line. Native broadleaf mix. Proportion of ash display branch-tip dieback and extensive deadwood consistent with early onset of ash dieback >75% foliage cover at time of assessment. Scrub-like in parts. Overhead power lines west of the group. Important secondary screening between housing and busy highway. Likely wildlife corridor.	Monitor physiological health annually due to presence of Ash Dieback.	B2	327	10.20
438520	278755	G3	Silver birch	<i>Betula pendula</i>	8	185	3 av.				1.8-W	Semi-mature	Good	Fair	Located within narrow grass verge east of Valencia Road. Short linear group of 3no. birch. Overhead power lines. Single-stemmed. Trees share cohesive mutual canopy. Clearly visible from public realm. Future potential.	No works required.	C1/2	137	6.60

BS5837:2012 TREE SURVEY SCHEDULE

SURVEY DATE: Sept & Oct 2023, April 2024 SITE: A46 Coventry Junctions (Walsgrave)

TREE PROTECTION STATUS: W1, G29 and all individual trees recorded within Coombe Pool Woodland are protected by RBC TPO No.82 (1985) and the Coombe Abbey CA.

SURVEYOR: [REDACTED] CLIENT: Octavius Infrastructure Limited

REFERENCE: HE604820-OIL-EGN-00-SH-LE-30001

X (Easting)	Y (Northing)	Ref No.	Common Name	Botanical Name	Height (m)	Stem Dia Ø (mm)	Branch Spread (m) N E S W	Height & Direction of First Significant Branch (m)	Age Class	Phys Con	Struc Con	General observations	Preliminary recommendations	BS5837 Retention Category	RPA (m ²)	RPA Radius (m)
438472	278840	G4	Small-leaved lime	<i>Tilia cordata</i>	8.5	335	5 av.	0.2-N	Semi- mature	Good	Good	Located within grass verge east of Valencia Road. Linear group of 12no. limes positioned on public open space between Valencia Road and highway embankment. Metal planting guards are beginning to fuse onto main stems. Well-formed trees of amenity value and potential long-term contribution.	Remove metal planting guards to prevent further conflict with main stems.	B1/2	150	6.90
438406	279004	G5	Field maple Sycamore Silver birch Common hawthorn Common ash Blackthorn Pedunculate oak Dog rose Rowan Guelder rose Raywood ash	<i>Acer campestre</i> <i>Acer pseudoplatanus</i> <i>Betula pendula</i> <i>Crataegus monogyna</i> <i>Fraxinus excelsior</i> <i>Prunus spinosa</i> <i>Quercus robur</i> <i>Rosa canina</i> <i>Sorbus aucuparia</i> <i>Viburnum opulus</i> <i>Fraxinus angustifolia</i> 'Raywood'	16	365	4 av.	0.2-N	Early- mature	Mixed	Fair	Located to west side of A46. Linear group running north to south between B4027 Brinklow Road and B4082. Highway embankment planting (soft state). Broadleaf species mix. Spans from edge of carriageway west to fence line and POS. Dense composition. Height differentiates. Lower profile and scrub-like in parts. Overhead power lines further west of the group. Proportion of ash display branch-tip dieback and extensive deadwood consistent with various stages of Ash Dieback, some with <25% foliage cover remaining. Important screening from busy Highway. Likely habitat corridor. Moderate collective value.	Part-loss for proposed scheme.	B2	113	6.00
438333	279109	G6	Field maple Sycamore Common dogwood Common hazel Common hawthorn Common ash Blackthorn Pedunculate oak Dog rose White willow Goat willow Osier	<i>Acer campestre</i> <i>Acer pseudoplatanus</i> <i>Cornus sanguinea</i> <i>Corylus avellana</i> <i>Crataegus monogyna</i> <i>Fraxinus excelsior</i> <i>Prunus spinosa</i> <i>Quercus robur</i> <i>Rosa canina</i> <i>Salix alba</i> <i>Salix caprea</i> <i>Salix viminalis</i>	10	400	3 av.	0-N	Early- mature	Good	Fair	Located west of A46 and group G5. Scrub-like group running north to south between public footpath of POS and highway embankment. Predominantly self-set trees and those which have regenerated from stumps. Group managed low given their positioning within ditch network directly beneath overhead power lines. Some larger willows to western boundary adjacent public footpath. Low overall arboricultural value. Likely habitat contribution. Low-level secondary screening from busy Highway.	No works required.	C2	125	6.30
438001	279389	G7	Field maple Silver birch Common dogwood Common hazel Common hawthorn Common ash Wild privet Blackthorn Pedunculate oak Crack willow	<i>Acer campestre</i> <i>Betula pendula</i> <i>Cornus sanguinea</i> <i>Corylus avellana</i> <i>Crataegus monogyna</i> <i>Fraxinus excelsior</i> <i>Ligustrum vulgare</i> <i>Prunus spinosa</i> <i>Quercus robur</i> <i>Salix fragilis</i>	15	385	4 av.	0-N	Early- mature	Mixed	Good	Linear group located south side of B4082. Group runs east to west between highway and POS bordering Smithe Brook. Broadleaf species mix. Dense composition. Height differentiates. Informal footpaths beneath. Collectively of important screening between residential housing estate/POS and busy Highway. Some thinning of understorey ash saplings likely attributed to Ash Dieback. Likely habitat value.	Monitor physiological health annually due to presence of Ash Dieback.	B1/2	346	10.50

BS5837:2012 TREE SURVEY SCHEDULE

SURVEY DATE: Sept & Oct 2023, April 2024 SITE: A46 Coventry Junctions (Walsgrave)

TREE PROTECTION STATUS: W1, G29 and all individual trees recorded within Coombe Pool Woodland are protected by RBC TPO No.82 (1985) and the Coombe Abbey CA.

SURVEYOR: [REDACTED] CLIENT: Octavius Infrastructure Limited

REFERENCE: HE604820-OIL-EGN-00-SH-LE-30001

X (Easting)	Y (Northing)	Ref No.	Common Name	Botanical Name	Height (m)	Stem Dia Ø (mm)	Branch Spread (m) N E S W	Height & Direction of First Significant Branch (m)	Age Class	Phys Con	Struc Con	General observations	Preliminary recommendations	BS5837 Retention Category	RPA (m²)	RPA Radius (m)
438197	279326	G8	Field maple Silver birch Common dogwood Common hazel Common hawthorn Common ash Wild privet Scots pine Blackthorn Pedunculate oak Crack willow	<i>Acer campestre</i> <i>Betula pendula</i> <i>Cornus sanguinea</i> <i>Corylus avellana</i> <i>Crataegus monogyna</i> <i>Fraxinus excelsior</i> <i>Ligustrum vulgare</i> <i>Pinus sylvestris</i> <i>Prunus spinosa</i> <i>Quercus robur</i> <i>Salix fragilis</i>	15	385	4 av.	0-N	Early- mature	Mixed	Good	An extension of previous group G7 which breaks for field access point. Linear group located south side of B4082. Group runs east to west between highway and POS bordering Smithe Brook / private field land. Mixed species. Dense composition. Height differentiates. Informal footpaths beneath. Collectively of important screening between residential housing estate/POS and busy Highway. Some thinning of understorey ash saplings likely attributed to Ash Dieback. Likely habitat value.	Part-loss for proposed scheme.	B1/2	499	12.60
438662	278619	G9	Silver birch Common dogwood Common hazel Common hawthorn Blackthorn Raywood ash	<i>Betula pendula</i> <i>Cornus sanguinea</i> <i>Corylus avellana</i> <i>Crataegus monogyna</i> <i>Prunus spinosa</i> <i>Fraxinus angustifolia</i> 'Raywood'	9	200	3 av.	0-N	Semi- mature	Good	Fair	Located to east side of A46. Linear highway embankment group (soft state) south of B4027 Brinklow Road. Broadleaf species mix. Dense composition, access restricted. Spans east to post and rail timber fence line. Scrub-like. Mostly smaller scale trees than several groups on the west side of the highway. Collectively of screening value and likely habitat corridor. Limited arboricultural quality.	No works required.	C1/2	222	8.40
438454	279018	G10	Field maple Common hazel Common hawthorn Narrow leaved ash Common ash Scots pine Wild cherry Cherry plum Plum Bird cherry Blackthorn Pedunculate oak Dog rose	<i>Acer campestre</i> <i>Corylus avellana</i> <i>Crataegus monogyna</i> <i>Fraxinus angustifolia</i> <i>Fraxinus excelsior</i> <i>Pinus sylvestris</i> <i>Prunus avium</i> <i>Prunus cerasifera</i> <i>Prunus domestica</i> <i>Prunus padus</i> <i>Prunus spinosa</i> <i>Quercus robur</i> <i>Rosa canina</i>	14	275	4 av.	0-N	Semi- mature	Mixed	Fair	Located to east side of A46 north of B4027 Brinklow Road. Highway embankment planting group (soft state) running roughly north to south. Bordering Coombe Pool further east beyond post and rail timber fence line. Dense composition restricts full access. Scrub-like understorey. Overstorey dominated by ash trees displaying various stages of Ash Dieback from 25-75% foliage dieback. Lots of dead and declining ash saplings close to roundabout. Understorey dominated by mixed thorn. Highway screening value. Likely habitat corridor. Varied overall arboricultural quality. Moderate collective value.	Part-loss for proposed scheme.	B1/2	523	12.90
437991	279420	G11	Field maple Common ash	<i>Acer campestre</i> <i>Fraxinus excelsior</i>	7	175	2.8 av.	0-N	Young	Mixed	Fair	Located west of A46. Group positioned close to roundabout connecting B4082 and Clifford Bridge Road. Short group dominated by ash, lesser field maple. Likely self-set. Ash show symptoms consistent with early onset of Ash Dieback. Low collective arboricultural value.	Remove ash saplings heavily infected by Ash Dieback.	C1/2	92	5.40
438059	279406	G12	Field maple Silver birch Common hawthorn Common ash Blackthorn Crack willow	<i>Acer campestre</i> <i>Betula pendula</i> <i>Crataegus monogyna</i> <i>Fraxinus excelsior</i> <i>Prunus spinosa</i> <i>Salix fragilis</i>	15	315	4 av.	0.2-E	Early- mature	Good	Fair	Located towards western aspect of site. Linear group positioned north of B4082 between Smithe Brook and access to Hungerley Hall Farm. Overhead utility lines north side of group. Mixed broadleaf species. Structural highway planting. Dense planting composition. Important screening between private farmland and busy highway.	No works required.	B1/2	346	10.50

BS5837:2012 TREE SURVEY SCHEDULE

SURVEY DATE: Sept & Oct 2023, April 2024 **SITE:** A46 Coventry Junctions (Walsgrave)

TREE PROTECTION STATUS: W1, G29 and all individual trees recorded within Coombe Pool Woodland are protected by RBC TPO No.82 (1985) and the Coombe Abbey CA.

SURVEYOR: [REDACTED] **CLIENT:** Octavius Infrastructure Limited

REFERENCE: HE004820-OIL-EGN-00-SH-LE-30001

X (Easting)	Y (Northing)	Ref No.	Common Name	Botanical Name	Height (m)	Stem Dia Ø (mm)	Branch Spread (m) N E S W	Height & Direction of First Significant Branch (m)	Age Class	Phys Con	Struc Con	General observations	Preliminary recommendations	BS5837 Retention Category	RPA (m²)	RPA Radius (m)
438186	279380	G13	Field maple Silver birch Common hawthorn Common ash Blackthorn Pedunculate oak Crack willow	<i>Acer campestre</i> <i>Betula pendula</i> <i>Crataegus monogyna</i> <i>Fraxinus excelsior</i> <i>Prunus spinosa</i> <i>Quercus robur</i> <i>Salix fragilis</i>	16	315	4 av.	0.2-W	Early- mature	Good	Fair	Located towards western aspect of site. Linear group positioned north of B4082 between access to Hungerley Hall Farm and A46 roundabout. Mixed broadleaf species. Structural highway planting. Dense planting composition. Important screening between private farmland and busy highway.	Part-loss for proposed scheme.	B1/2	206	8.10
438362	279297	G14	Field maple Common dogwood Common hawthorn Wild cherry Bird cherry Blackthorn Pedunculate oak Elder	<i>Acer campestre</i> <i>Cornus sanguinea</i> <i>Crataegus monogyna</i> <i>Prunus avium</i> <i>Prunus padus</i> <i>Prunus spinosa</i> <i>Quercus robur</i> <i>Sambucus nigra</i>	9	220	3 av.	0-N	Semi- mature	Good	Fair	Located towards central aspect of site. Planting group establishing from roundabout connecting A46 and B4082. No access to carry out detailed assessment, measurements estimated. Mixed broadleaf trees and low-level scrub/vegetation. Limited collective arboricultural value.	Fell for proposed scheme.	C1/2	387	11.10
438323	279320	G15	Common hawthorn Common ash Pedunculate oak	<i>Crataegus monogyna</i> <i>Fraxinus excelsior</i> <i>Quercus robur</i>	5	240	3 av.	0.5-E	Young	Mixed	Good	Located to central/western aspect of site. Self-set scattered young trees and scrub-like vegetation positioned on highway verge close to roundabout linking A46 and B4082. Low collective quality and value.	Fell for proposed scheme.	C1/2	113	6.00
438443	279437	G16	Common holly	<i>Ilex aquifolium</i>	8.5	365	4 av.	0-N	Mature	Dead	Poor	Located within ownership of Hungerley Hall Farm west of A46. Short group of 3no. standing dead holly. No future arboricultural value. Potential habitat value.	Fell for proposed scheme.	U	28	3.00
438521	279502	G17	Field maple Common hawthorn Narrow leaved ash Common ash Blackthorn Pedunculate oak	<i>Acer campestre</i> <i>Crataegus monogyna</i> <i>Fraxinus angustifolia</i> <i>Fraxinus excelsior</i> <i>Prunus spinosa</i> <i>Quercus robur</i>	15	325	4 av.	0-N	Semi- mature	Mixed	Good	Highway embankment planting (soft state) west side of A46. Borders land at Hungerley Hall Farm. Spans from farm north to A46 bridge/overpass. Dense composition. Dominated by ash. Interspersed oak, mixed understorey. Ash display early signs of Ash Dieback. Collectively of important screening between highway and farmland. Likely habitat contribution. Moderate collective value.	Fell for proposed scheme.	B1/2	23	2.70
438649	279883	G18	Common ash	<i>Fraxinus excelsior</i>	17	415	7 av.	2.5-S	Mature	Fair	Fair	Located west of A46. Establishing from hedgerow dividing Hungerley Hall Farm and Walsgrave Hill Farm. Short group of 3no. ash. Tall, slender form. Trees share cohesive mutual canopy. Foliage density quite sparse consistent with early infection of Ash Dieback, c.75% foliage cover at time of assessment. Limited long-term retention viability.	Fell for proposed scheme.	C1/2	598	13.80
438582	279902	G19	Common holly	<i>Ilex aquifolium</i>	12	612	5 av.	3-E	Mature	Good	Good	Located west of A46. Establishing from hedgerow dividing Hungerley Hall Farm and Walsgrave Hill Farm. Pair of mature, multi-stemmed holly. Ivy cover. Trees share cohesive mutual canopy. Moderate collective value.	Fell for proposed scheme.	B1/2	254	9.00

BS5837:2012 TREE SURVEY SCHEDULE

SURVEY DATE: Sept & Oct 2023, April 2024 SITE: A46 Coventry Junctions (Walsgrave)

TREE PROTECTION STATUS: W1, G29 and all individual trees recorded within Coombe Pool Woodland are protected by RBC TPO No.82 (1985) and the Coombe Abbey CA.

SURVEYOR: [REDACTED] CLIENT: Octavius Infrastructure Limited

REFERENCE: HE604820-OIL-EGN-00-SH-LE-30001

X (Easting)	Y (Northing)	Ref No.	Common Name	Botanical Name	Height (m)	Stem Dia Ø (mm)	Branch Spread (m) N E S W	Height & Direction of First Significant Branch (m)	Age Class	Phys Con	Struc Con	General observations	Preliminary recommendations	BS5837 Retention Category	RPA (m ²)	RPA Radius (m)
438802	280138	G20	Field maple Silver birch Common hazel Common hawthorn Narrow leaved ash Common ash Wild cherry Bird cherry Blackthorn Pedunculate oak Dog rose Elder Rowan Guelder rose	<i>Acer campestre</i> <i>Betula pendula</i> <i>Corylus avellana</i> <i>Crataegus monogyna</i> <i>Fraxinus angustifolia</i> <i>Fraxinus excelsior</i> <i>Prunus avium</i> <i>Prunus padus</i> <i>Prunus spinosa</i> <i>Quercus robur</i> <i>Rosa canina</i> <i>Sambucus nigra</i> <i>Sorbus aucuparia</i> <i>Viburnum opulus</i>	17	345	4 av.	0.5-W	Early- mature	Mixed	Good	Large highway embankment group (soft state) positioned west side of A46. Immediately bordering carriageway east and farmland west. Running roughly north to south. Mixed species composition. Overall height differentiates. Ash display early signs of Ash Dieback. Collectively of important screening between highway and farmland. Likely habitat contribution. Moderate collective value. Large break in group towards northern end approaching overpass / bridge.	Part-loss for proposed scheme.	B1/2	102	5.70
438911	280472	G21	Field maple Common hawthorn Blackthorn Elder	<i>Acer campestre</i> <i>Crataegus monogyna</i> <i>Prunus spinosa</i> <i>Sambucus nigra</i>	3	200	2.5 av.	0-NE	Early- mature	Fair	Fair	Located west of A46 upon highway embankment. Low-level group of self-set scrub and vegetation between carriageway and field boundary hedge line. Clearly much lower profile group than that of the wider western embankment planting. Limited collective value.	No works required.	C2	238	8.70
438983	280717	G22	Norway maple	<i>Acer platanoides</i>	15	415	8 av.	2-E	Early- mature	Good	Fair	Located east of A46 adjacent to access track and overpass / bridge. Linear group of 9no. Norway maple. Not captured on topo, position is estimated. Trees establish from steep embankment. Planting stakes at base. Partial ivy cover. Dense combined mutual canopy. Moderate collective value.	Sever ivy and allow to dieback. Remove planting stakes at base.	B1/2	222	8.40
439049	280925	G23	Field maple Silver birch Common hazel Common hawthorn Narrow leaved ash Common ash Wild cherry Bird cherry Blackthorn Pedunculate oak Dog rose Elder Rowan Guelder rose Hybrid poplar	<i>Acer campestre</i> <i>Betula pendula</i> <i>Corylus avellana</i> <i>Crataegus monogyna</i> <i>Fraxinus angustifolia</i> <i>Fraxinus excelsior</i> <i>Prunus avium</i> <i>Prunus padus</i> <i>Prunus spinosa</i> <i>Quercus robur</i> <i>Rosa canina</i> <i>Sambucus nigra</i> <i>Sorbus aucuparia</i> <i>Viburnum opulus</i> <i>Populus x canadensis</i>	17	345	4 av.	0.5-S	Early- mature	Fair	Good	An extension of G20 although further north of overpass / bridge. Large highway embankment group (soft state) positioned west side of A46. Immediately bordering carriageway east and farmland west. Running roughly north to south. Mixed species composition. Overall height differentiates. Ash display early signs of Ash Dieback. Collectively of important screening between highway and farmland. Likely habitat contribution. Moderate collective value.	Monitor physiological health annually due to presence of Ash Dieback.	B1/2	84	4.50

BS5837:2012 TREE SURVEY SCHEDULE

SURVEY DATE: Sept & Oct 2023, April 2024 **SITE:** A46 Coventry Junctions (Walsgrave) **TREE PROTECTION STATUS:** W1, G29 and all individual trees recorded within Coombe Pool Woodland are protected by RBC TPO No.82 (1985) and the Coombe Abbey CA.
SURVEYOR: XXXXXXXXXX **CLIENT:** Octavius Infrastructure Limited
REFERENCE: HE004820-OIL-EGN-00-SH-LE-30001

X (Easting)	Y (Northing)	Ref No.	Common Name	Botanical Name	Height (m)	Stem Dia Ø (mm)	Branch Spread (m) N E S W	Height & Direction of First Significant Branch (m)	Age Class	Phys Con	Struc Con	General observations	Preliminary recommendations	BS5837 Retention Category	RPA (m²)	RPA Radius (m)
439123	281026	G24	Field maple Silver birch Common hazel Common hawthorn Narrow leaved ash Common ash Wild cherry Bird cherry Blackthorn Pedunculate oak Dog rose Elder Rowan Guelder rose Hybrid poplar	<i>Acer campestre</i> <i>Betula pendula</i> <i>Corylus avellana</i> <i>Crataegus monogyna</i> <i>Fraxinus angustifolia</i> <i>Fraxinus excelsior</i> <i>Prunus avium</i> <i>Prunus padus</i> <i>Prunus spinosa</i> <i>Quercus robur</i> <i>Rosa canina</i> <i>Sambucus nigra</i> <i>Sorbus aucuparia</i> <i>Viburnum opulus</i> <i>Populus x canadensis</i>	17	345	4 av.	0.5-W	Early- mature	Fair	Good	Large highway embankment group (soft state) positioned east side of A46. Immediately bordering carriageway west and farmland east. Running roughly north to south. Mixed species composition. Overall height differentiates. Ash display early signs of Ash Dieback. Collectively of important screening between highway and farmland. Likely habitat contribution. Moderate collective value.	Monitor physiological health annually due to presence of Ash Dieback.	B1/2	177	7.50
439045	280789	G25	Field maple Silver birch Common hawthorn Common ash Wild cherry Blackthorn Pedunculate oak	<i>Acer campestre</i> <i>Betula pendula</i> <i>Crataegus monogyna</i> <i>Fraxinus excelsior</i> <i>Prunus avium</i> <i>Prunus spinosa</i> <i>Quercus robur</i>	14	275	4 av.	0.5-E	Semi- mature	Mixed	Good	Highway embankment planting group (soft state) located east side of A46. Borders carriageway west and farmland east. Runs roughly north to south. Clearly smaller in size and spread than majority of highway planting groups recorded. Limited collective value. Potential habitat contribution. Ash display symptoms of Ash Dieback, smaller saplings heavily infected >75% foliage loss.	Remove ash saplings heavily infected by Ash Dieback. Monitor physiological health annually due to presence of Ash Dieback.	C1/2	137	6.60
438951	280174	G26	Goat willow Osier	<i>Salix caprea</i> <i>Salix viminalis</i>	8	385	3.5 av.	0-N	Early- mature	Good	Fair	Located within field east of A46. Land under ownership of Walsgrave Hill Farm. Willow group establishes from margin of natural pond. Trees share dense combined canopies. Limited arboricultural merit. Potential habitat value.	No works required.	C2	177	7.50
438841	280135	G27	Field maple Silver birch Common hazel Common hawthorn Narrow leaved ash Common ash Wild cherry Bird cherry Blackthorn Pedunculate oak Dog rose Elder Rowan Guelder rose	<i>Acer campestre</i> <i>Betula pendula</i> <i>Corylus avellana</i> <i>Crataegus monogyna</i> <i>Fraxinus angustifolia</i> <i>Fraxinus excelsior</i> <i>Prunus avium</i> <i>Prunus padus</i> <i>Prunus spinosa</i> <i>Quercus robur</i> <i>Rosa canina</i> <i>Sambucus nigra</i> <i>Sorbus aucuparia</i> <i>Viburnum opulus</i>	14	335	4 av.	0.5-E	Early- mature	Mixed	Fair	Large highway embankment planting group (soft state) located east side of A46. Borders carriageway west and farmland east. Runs roughly north to south. Broadleaf species mix. Much more broken and sporadic tree cover than majority of highway planting groups recorded. Overstorey dominated by semi-mature ash. Potential habitat contribution. Ash display symptoms of Ash Dieback with varied infection rate. Large gaps occur. Limited collective value.	Part-loss for proposed scheme.	C2	206	8.10

BS5837:2012 TREE SURVEY SCHEDULE

SURVEY DATE: Sept & Oct 2023, April 2024 SITE: A46 Coventry Junctions (Walsgrave)

TREE PROTECTION STATUS: W1, G29 and all individual trees recorded within Coombe Pool Woodland are protected by RBC TPO No.82 (1985) and the Coombe Abbey CA.

SURVEYOR: [REDACTED] CLIENT: Octavius Infrastructure Limited

REFERENCE: HE604820-OIL-EGN-00-SH-LE-30001

X (Easting)	Y (Northing)	Ref No.	Common Name	Botanical Name	Height (m)	Stem Dia Ø (mm)	Branch Spread (m) N E S W	Height & Direction of First Significant Branch (m)	Age Class	Phys Con	Struc Con	General observations	Preliminary recommendations	BS5837 Retention Category	RPA (m²)	RPA Radius (m)
438551	279464	G28	Field maple Silver birch Common hazel Common hawthorn Narrow leaved ash Common ash Wild cherry Bird cherry Blackthorn Pedunculate oak Dog rose Elder Rowan Guelder rose	<i>Acer campestre</i> <i>Betula pendula</i> <i>Corylus avellana</i> <i>Crataegus monogyna</i> <i>Fraxinus angustifolia</i> <i>Fraxinus excelsior</i> <i>Prunus avium</i> <i>Prunus padus</i> <i>Prunus spinosa</i> <i>Quercus robur</i> <i>Rosa canina</i> <i>Sambucus nigra</i> <i>Sorbus aucuparia</i> <i>Viburnum opulus</i>	13	335	4 av.	0.5-E	Early- mature	Mixed	Fair	An extension of group G27 although further south of overpass / bridge. Highway embankment planting group (soft state) located east side of A46. Borders carriageway west and farmland east. Runs roughly north to south from overpass / bridge close to roundabout. Broadleaf species mix. More dense composition than G26 although still scrub-like in part. Overstorey dominated by semi-mature ash. Potential habitat contribution. Ash display symptoms of Ash Dieback with varied infection rate. Multiple declining ash sapling close to edge of highway towards southern end of group. Limited collective value.	Part-loss for proposed scheme.	C2	452	12.00
438427	279236	G29 (TPO)	Sycamore Common hazel Common hawthorn Common ash English holly Rhododendron sp.	<i>Acer pseudoplatanus</i> <i>Corylus avellana</i> <i>Crataegus monogyna</i> <i>Fraxinus excelsior</i> <i>Ilex aquifolium</i> <i>Rhododendron ponticum</i>	10	180	2.5 av.	0-N	Early- mature	Good	Fair	GROUP PROTECTED BY RUGBY BOROUGH COUNCIL TPO NO.89. Understorey group of mixed broadleaf trees follows post and rail fence line to Coombe Pool woodland margin. Borders highway embankment. Areas of dense rhododendron and bramble in part. Group breaks for headwall. Occasional self-set sycamore and ash. Larger prominent trees recorded individually. Woodland marginal group, low level screening from highway embankment and likely habitat corridor. Trees of limited arboricultural merit.	Prune low overhanging branches back to the SSSI boundary where necessary, to repair sections of broken fencing.	C2	327	10.20
438120	279422	H1	Field maple Common hawthorn Blackthorn Elder	<i>Acer campestre</i> <i>Crataegus monogyna</i> <i>Prunus spinosa</i> <i>Sambucus nigra</i>	2	100	2 av.	0-N	Early- mature	Good	Fair	Located to west of site. Linear field boundary hedgerow west side of access driveway at Hungerley Hall Farm. Dense bramble cover in part. Limited wider connectivity.	No works required.	C2	327	10.20
438324	279327	H2	Field maple Common hawthorn Blackthorn Elder	<i>Acer campestre</i> <i>Crataegus monogyna</i> <i>Prunus spinosa</i> <i>Sambucus nigra</i>	2.5	125	2.5 av.	0-N	Mature	Good	Good	Located to central/western aspect of site. Positioned at top of highway planting embankment bordering Hungerley Hall Farm and Walsgrave Hill Farm. Runs virtually the entire length of the western highway boundary. Principally hawthorn. Managed to 1.8metres with dense annual growth. Low level screening between farmland and busy highway. Height mostly unmanaged. Farm side managed in part. Likely habitat corridor.	Part-loss for proposed scheme.	B2	64	4.50
438451	279443	H3	Common hawthorn	<i>Crataegus monogyna</i>	2.2	150	2.5 av.	0-N	Early- mature	Good	Good	Located within ownership of Hungerley Hall Farm. Very short section of hedging between farm buildings and highway. Limited quantity. No further connectivity.	Fell for proposed scheme.	C2	64	4.50
438406	279442	H4	Box Common hawthorn Blackthorn	<i>Buxus sempervirens</i> <i>Crataegus monogyna</i> <i>Prunus spinosa</i>	3	100	2 av.	0-N	Mature	Good	Fair	Located within ownership of Hungerley Hall Farm. Linear hedgerow divides Farm buildings and wider field land. Breaks in hedge. Regularly managed.	Part-loss for proposed scheme.	C2	14	2.10

BS5837:2012 TREE SURVEY SCHEDULE

SURVEY DATE: Sept & Oct 2023, April 2024 **SITE:** A46 Coventry Junctions (Walsgrave)
SURVEYOR: [REDACTED] **CLIENT:** Octavius Infrastructure Limited
REFERENCE: HE004820-OIL-EGN-00-SH-LE-30001

TREE PROTECTION STATUS: W1, G29 and all individual trees recorded within Coombe Pool Woodland are protected by RBC TPO No.69 (1985) and the Coombe Abbey CA.

X (Easting)	Y (Northing)	Ref No.	Common Name	Botanical Name	Height (m)	Stem Dia Ø (mm)	Branch Spread (m) N E S W	Height & Direction of First Significant Branch (m)	Age Class	Phys Con	Struc Con	General observations	Preliminary recommendations	BS5837 Retention Category	RPA (m²)	RPA Radius (m)
438381	279572	H5	Common hawthorn Common holly Blackthorn Dog rose Elder	<i>Crataegus monogyna</i> <i>Ilex aquifolium</i> <i>Prunus spinosa</i> <i>Rosa canina</i> <i>Sambucus nigra</i>	2.5	120	3 av.	0-N	Mature	Good	Fair	Located within ownership of Hungerley Hall Farm. Linear mixed native field boundary hedgerow. Several breaks towards SE side close to farm buildings. Regularly managed. Likely habitat corridor.	Part-loss for proposed scheme	C2	48	3.90
438598	279871	H6	Common hawthorn Common ash Common holly Blackthorn Goat willow Elder Wych elm	<i>Crataegus monogyna</i> <i>Fraxinus excelsior</i> <i>Ilex aquifolium</i> <i>Prunus spinosa</i> <i>Salix caprea</i> <i>Sambucus nigra</i> <i>Ulmus glabra</i>	5	150	2.5 av.	0-N	Mature	Good	Fair	Located west of A46. Establishing from boundary line and ditch network dividing Hungerley Hall Farm and Walsgrave Hill Farm. Mixed species, field boundary hedgerow. Doglegs centrally. Height differentiates. Regular management. Landscape contribution and likely habitat corridor.	Part-loss for proposed scheme	B2	64	4.50
438707	280166	H7	Common hawthorn	<i>Crataegus monogyna</i>	1.8	100	2 av.	0-N	Mature	Good	Good	Located west of A46. Hedgerow under ownership of Walsgrave Hill Farm. Running roughly east to west. Dense composition. Recently felled. Landscape value. Likely habitat corridor.	Part-loss for proposed scheme.	B2	72	4.80
438761	280371	H8	Common hawthorn Blackthorn Dog rose	<i>Crataegus monogyna</i> <i>Prunus spinosa</i> <i>Rosa canina</i>	1.7	100	2 av.	0-N	Mature	Fair	Fair	Located west of A46. Follows boundary ditch network. Hedgerow under ownership of Walsgrave Hill Farm. Running roughly east to west. Mixed native species. Dense bramble. Scrub-like in part. Recently felled. Limited quantity. Potential habitat corridor although gaps at either end.	No works required.	C2	64	4.50
438920	280667	H9	Field maple Common hawthorn Blackthorn Dog rose Elder	<i>Acer campestre</i> <i>Crataegus monogyna</i> <i>Prunus spinosa</i> <i>Rosa canina</i> <i>Sambucus nigra</i>	2	90	2.5 av.	0-N	Mature	Fair	Fair	Located west of A46. Mixed native species composition. South of access track. Scrub-like in part. Dense bramble cover. Breaks for field access. Potential wildlife corridor.	No works required.	C2	64	4.50
438908	280682	H10	Field maple Common hawthorn Blackthorn Dog rose Elder	<i>Acer campestre</i> <i>Crataegus monogyna</i> <i>Prunus spinosa</i> <i>Rosa canina</i> <i>Sambucus nigra</i>	2	90	2.5 av.	0-N	Mature	Fair	Fair	Located west of A46 to field boundary. Mixed native species composition. North of access track. Scrub-like in part. Dense bramble cover. Breaks for field access. Potential wildlife corridor.	No works required.	C2	18	2.40
439018	280964	H11	Common hawthorn Blackthorn Elder	<i>Crataegus monogyna</i> <i>Prunus spinosa</i> <i>Sambucus nigra</i>	2	150	2 av.	0-N	Mature	Fair	Fair	Located west of A46 within ownership of Walsgrave Hill Farm. Hedgerow follows field boundary ditch network. Sparse composition. Dense bramble cover. Breaks further west. Low overall quality.	Restock gaps with a native species mix.	C2	34	3.30
439098	280861	H12	Common dogwood Common hawthorn Blackthorn Dog rose Elder Guelder rose	<i>Cornus sanguinea</i> <i>Crataegus monogyna</i> <i>Prunus spinosa</i> <i>Rosa canina</i> <i>Sambucus nigra</i> <i>Viburnum opulus</i>	1.8	100	2 av.	0-N	Mature	Fair	Fair	Located within field land east of A46. Under ownership of Walsgrave Hill Farm. Hedgerow running NW to SE. Mixed species composition. Breaks for field access point. Dense bramble cover. Thin and scrub-like in part. Limited overall quality.	Restock gaps with a native species mix.	C2	14	2.10

BS5837:2012 TREE SURVEY SCHEDULE

SURVEY DATE: Sept & Oct 2023, April 2024 SITE: A46 Coventry Junctions (Walsgrave)

TREE PROTECTION STATUS: W1, G29 and all individual trees recorded within Coombe Pool Woodland are protected by RBC TPO No.69 (1985) and the Coombe Abbey CA.

SURVEYOR: [REDACTED] CLIENT: Octavius Infrastructure Limited

REFERENCE: HE604820-OIL-EGN-00-SH-LE-30001

X (Easting)	Y (Northing)	Ref No.	Common Name	Botanical Name	Height (m)	Stem Dia Ø (mm)	Branch Spread (m) N E S W	Height & Direction of First Significant Branch (m)	Age Class	Phys Con	Struc Con	General observations	Preliminary recommendations	BS5837 Retention Category	RPA (m²)	RPA Radius (m)
439125	281014	H13	Field maple Common hawthorn Blackthorn Elder	<i>Acer campestre</i> <i>Crataegus monogyna</i> <i>Prunus spinosa</i> <i>Sambucus nigra</i>	2.5	125	2.5 av.	0-N	Mature	Good	Good	Located to eastern aspect of site. Positioned at top of highway planting embankment bordering Hungerley Hall Farm and Walsgrave Hill Farm. Runs virtually the entire length of the eastern highway boundary. Principally hawthorn. Managed to 1.8metres with dense annual growth. Low level screening between farmland and busy highway. Height mostly unmanaged. Farm side managed in part. Likely habitat corridor.	Part-loss for proposed scheme.	B2	48	3.90
439063	280690	H14	Common hawthorn Blackthorn	<i>Crataegus monogyna</i> <i>Prunus spinosa</i>	1.6	80	2 av.	0-N	Early-mature	Fair	Fair	Located east of A46. Field boundary hedgerow north side of farm access road. Follows post and rail fence line. Dense bramble cover. Low overall quality and value.	No works required.	C2	48	3.90
439048	280678	H15	Common hawthorn Blackthorn	<i>Crataegus monogyna</i> <i>Prunus spinosa</i>	1.6	80	2 av.	0-N	Early-mature	Fair	Fair	Located east of A46. Field boundary hedgerow south side of farm access road. Follows post and rail fence line. Dense bramble cover. Low overall quality and value.	No works required.	C2	23	2.70
438936	280310	H16	Common hawthorn Blackthorn Dog rose Elder	<i>Crataegus monogyna</i> <i>Prunus spinosa</i> <i>Rosa canina</i> <i>Sambucus nigra</i>	1.8	100	2 av.	0-N	Mature	Fair	Fair	Located east side of A46. Follows field boundary ditch network. Dense bramble cover. Scrub-like composition. Low overall quality. Continues further east beyond scope of assessment.	Part-loss for proposed scheme. Restock gaps in retained section with a native species mix.	C2	28	3.00
438804	279918	H17	Common hawthorn Blackthorn Dog rose Elder Wych elm	<i>Crataegus monogyna</i> <i>Prunus spinosa</i> <i>Rosa canina</i> <i>Sambucus nigra</i> <i>Ulmus glabra</i>	1.8	100	2 av.	0-N	Mature	Fair	Fair	Located east of A46. Establishing from boundary between Hungerley Hall Farm and Walsgrave Hill Farm. Thin composition with clear gaps in part. Continues further east beyond scope of assessment.	Fell for proposed scheme.	C2	64	4.50
438896	279635	H18	Common hawthorn Blackthorn Dog rose	<i>Crataegus monogyna</i> <i>Prunus spinosa</i> <i>Rosa canina</i>	1.5	120	1.5 av.	0-N	Mature	Good	Fair	Located east of A46. Hedgerow within field running roughly east to west. Remnants of former larger field boundary hedgerow. Narrow and quite sparse in part. Regular management.	Restock gaps with a native species mix.	C2	48	3.90

BS5837:2012 TREE SURVEY SCHEDULE

SURVEY DATE: Sept & Oct 2023, April 2024 SITE: A46 Coventry Junctions (Walsgrave)

TREE PROTECTION STATUS: W1, G29 and all individual trees recorded within Coombe Pool Woodland are protected by RBC TPO No.89 (1985) and the Coombe Abbey CA.

SURVEYOR: [REDACTED]

CLIENT: Octavius Infrastructure Limited

REFERENCE: HE004820-OIL-EGN-00-SH-LE-30001

X (Easting)	Y (Northing)	Ref No.	Common Name	Botanical Name	Height (m)	Stem Dia Ø (mm)	Branch Spread (m) N E S W	Height & Direction of First Significant Branch (m)	Age Class	Phys Con	Struc Con	General observations	Preliminary recommendations	BS5837 Retention Category	RPA (m²)	RPA Radius (m)
438480	279100	W1 (TPO)	Field maple Sycamore Horse chestnut Hornbeam Deodar cedar Common hazel Common hawthorn Common beech Common ash Scots pine Wild cherry Pedunculate oak Red oak Small-leaved lime Common lime Wych elm	<i>Acer campestre</i> <i>Acer pseudoplatanus</i> <i>Aesculus hippocastanum</i> <i>Carpinus betulus</i> <i>Cedrus deodara</i> <i>Corylus avellana</i> <i>Crataegus monogyna</i> <i>Fagus sylvatica</i> <i>Fraxinus excelsior</i> <i>Pinus sylvestris</i> <i>Prunus avium</i> <i>Quercus robur</i> <i>Quercus rubra</i> <i>Tilia cordata</i> <i>Tilia x europea</i> <i>Ulmus glabra</i>	22	930	7 av.	1.5-E	Mature	Mixed	Fair	WOODLAND PROTECTED BY RUGBY BOROUGH COUNCIL TPO NO.89. Located off-site beyond redline survey boundary. Linear woodland belt east of A46 framing Coombe Pool. Mixed broadleaf and coniferous composition. Large overstorey oak, pine, ash, horse chestnut, lime, sycamore with mixed understorey. Ground vegetation restricts full assessment. High value wooded belt. Historic significance to Coombe Abbey. Mostly scrub-like immediately bordering highway embankment to west, more significant trees further east towards water body. Woodland continues further east towards Coombe Country Park. Many ash display symptoms consistent with Ash Dieback. Standing dead and windblown trees framing field boundary to northeast. Significant collective arboricultural, landscape and likely ecological value.	No works required.	A1/2	82	5.10

Survey Methodology

BS5837:2012 Tree Survey Methodology

Reference Number: This is the identification number associated with each Tree (T), Group (G), Hedgerow (H) and Woodland (W) recorded during the Site assessment. The identification number is cross referenced within the Tree Schedule and Tree Plans to indicate the type of recorded feature.

Common and Botanical Names: Recorded tree common name classification together with the scientific name where available.

Height (m): Height of the tree measured from ground level to the nearest half metre. The height of group and woodland features is taken as an average measurement where differences occur.

Stem Diameter (mm): The tree stem diameter is measured at 1.5metres above ground level and recorded in mm. For trees with more than one stem, one of two calculation methods should be used. In all cases, the stem diameter(s) is measured in accordance with Annex C of BS5837:2012.

Branch Spread (m): Distance recorded in metres from the tree stem to the periphery of the branch/crown spread in each of the four cardinal directions (N - North, E - East, S - South, W – West). The branch spread of group and woodland features is taken as an average measurement where differences occur.

Height of Crown Clearance / First Branch (m): Distance between the ground level and the lowest point of the tree crown or first branch recorded to the nearest half metre. The height of the first significant branch is given a cardinal direction where appropriate.

Age Class: NP – Newly planted, Yng – Young, S/Mat – Semi-mature, E/Mat – Early-mature, Mat – Mature, O/Mat – Over-mature, Vet – Veteran, Anc – Ancient.

Physiological Condition: Good, Fair, Poor, Decline, Dead.

Structural Condition: Good, Fair, Poor.

General Observations: A brief description of each recorded tree or tree group feature including location, growing conditions and surroundings, form, health & vitality together with the identification of any notable structural and/or physiological defects. Tree quality, longevity and public amenity value are also assessed.

Management Recommendations: Tree work recommendations to address significant and immediate risks to prevent foreseeable damage occurring to adjacent property and/or publicly accessible land. Or works required to facilitate the development.

BS5837 Retention Category: Tree retention category is based on Table 1 of BS5837:2012 – Cascade Chart for Tree Quality Assessment. This includes Category A – trees of high quality, Category B – trees of moderate quality, Category C – trees

of low quality, Category U – trees of poor quality. Full classification details can be found within the Cascade Chart.

RPA (m²): Root Protection Area associated with each tree containing sufficient soil volume to maintain the trees health, vitality and anchorage calculated from the stem diameter and measured in m² according to Annex D of BS5837:2012. The group RPA is calculated from the average stem diameter recorded.

RPA Radius (m): Radius of the tree Root Protection Area measured in meters, when typically plotted as a circle around the tree stem.

Annex B: Arboricultural Plans

Tree Constraints Plans

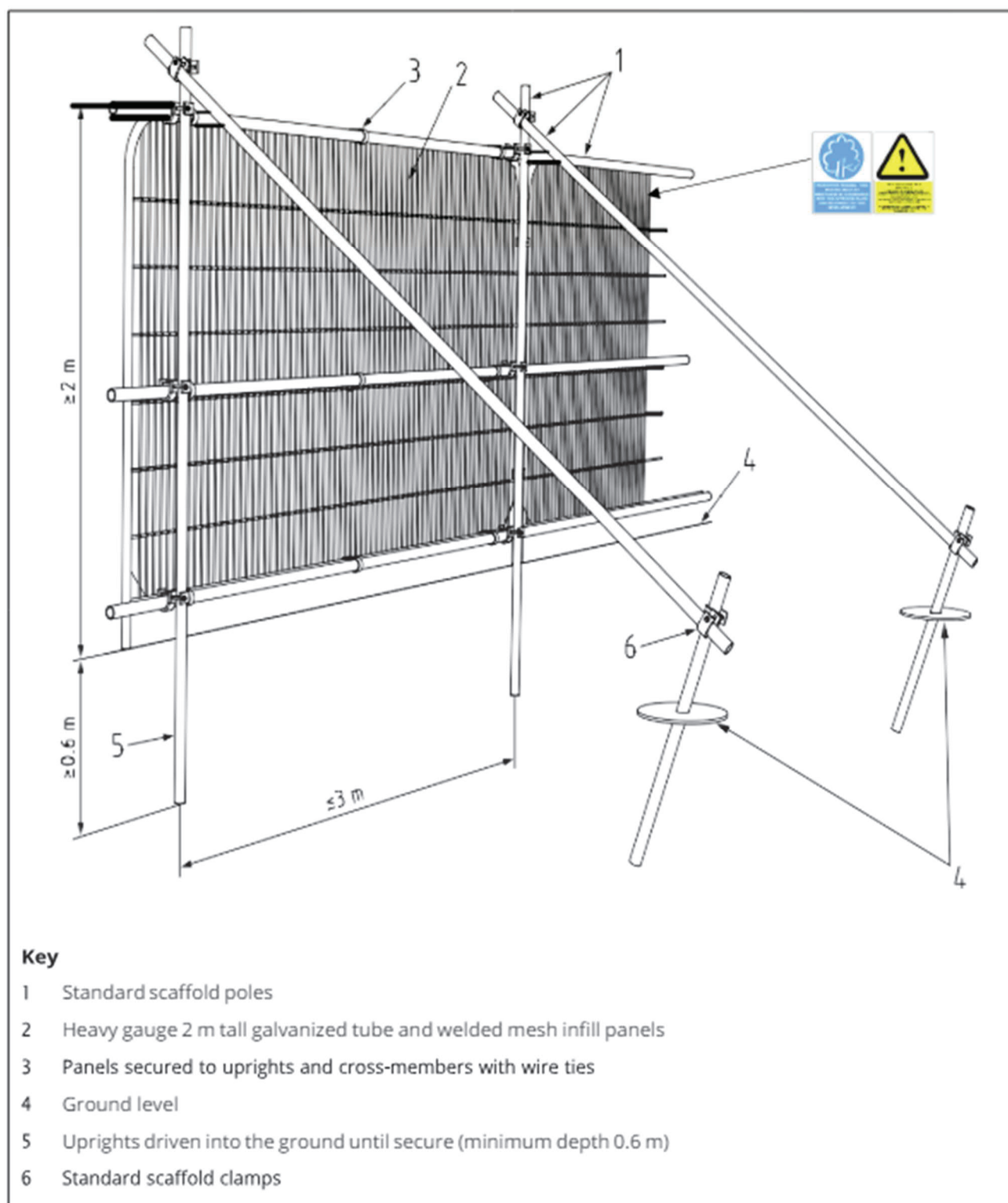
Tree Protection Plans

**Submitted as a separate
document**

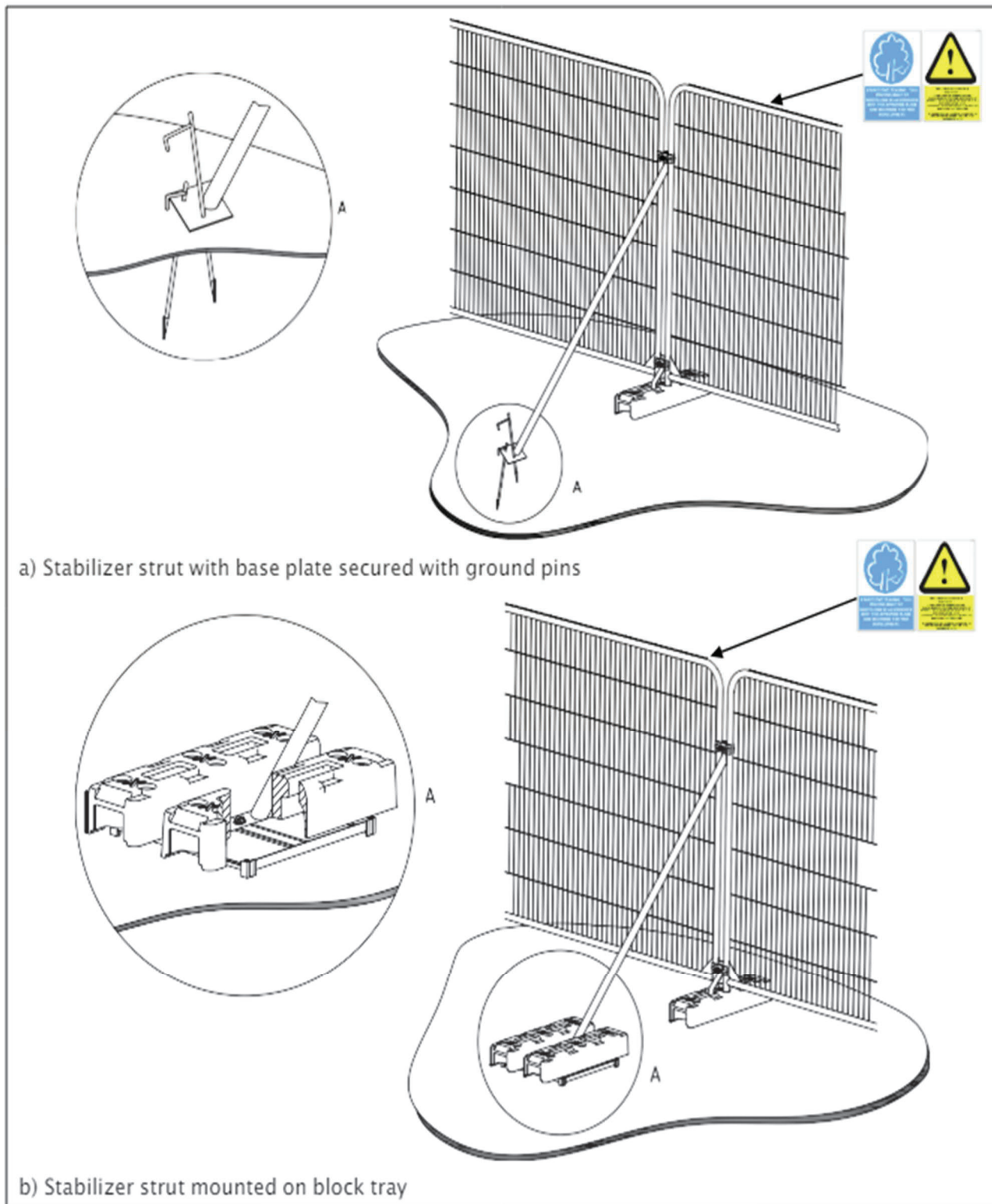
Annex C: Tree Protection

Tree protective fencing specification and notices

BS5837:2012 Figure 2 Default specification for protective barrier



BS5837:2012 Figure 3 Example Non-Default specification for protective barrier



BS5837:2012 Example tree protection fencing signage

